

## Meter Installation and Service Lateral Phase 2 Project RFP Addendum #1

**Project Description:**

RFP to provide the installation of approximately 4,500 metered service connections, including meters, meter boxes, backflow prevention assemblies, and all related appurtenances to support the return of metered potable water service to the Paradise Irrigation District. The project includes the replacement of up to 1,750 service laterals including service saddles, piping, and angle stops as well as all related fittings and materials required for backflow and surface restoration.

**For:**

Paradise Irrigation District  
6332 Clark Rd  
Paradise CA 95969

**Proposals Due:**

2:00 pm, Friday May 7, 2021

**Addendum #1 contains the following:**

1. Mandatory Prebid Meeting Agenda and Sign In Sheet
2. RFP Questions and Answers
3. Plan Holders List
4. Revision to Bidders Checklist 00120 – Use for Final Bid Submission
5. Required Forms – Use for Final Bid Submission
6. Revisions to Specifications
7. Revisions to PID Standard Details
8. Davis-Bacon Act Wage Determinations

APPROVED: \_\_\_\_\_



COLLEEN BOAK, PE  
Project Engineer  
[colleenb@wwengineers.com](mailto:colleenb@wwengineers.com)  
530-240-6180

**DATE ISSUED:** April 27, 2021

---

## Mandatory Prebid Meeting Agenda and Sign In Sheet

---

1. **Mandatory Prebid Meeting Agenda and Sign in Sheet** – See attached

## Paradise Irrigation District – Meter Installation and Service Lateral Phase 2 Project

### PREBID Meeting Agenda

<b>Date:</b>	Wednesday, April 21, 2021	
<b>Time:</b>	10:00 AM	
<b>Location:</b>	Paradise Irrigation District Office – Parking Lot 6332 Clark Rd, Paradise, CA 95969	
<b>Meeting:</b>	Mandatory PREBID Meeting – Meter Installation and Service Lateral Replacement Project Phase 2 (MISLR) Project	
<b>Representatives:</b>	<b>Paradise Irrigation District (PID)</b> Pete Grout, Field Superintendent Jeff Hill, Asst. Field Superintendent Kaylin Trotter, Project Coordinator	<b>Water Works Engineers (WWE)</b> Colleen Boak, PE
Item No.	Description	
1.0	<b>INTRODUCTION AND OVERVIEW</b> <ul style="list-style-type: none"> <li>A. Meeting Purpose: <u>MANDATORY</u> PREBID MEETING FOR PARADISE IRRIGATION DISTRICT METER INSTALLATION AND SERVICE LATERAL REPLACEMENT PHASE 2 PROJECT – installation of approximately 4,500 metered service connections and replacement of up to 1,750 service laterals and related fittings throughout the PID service area in support of the rebuilding and recovery efforts following the 2018 Camp Fire.</li> <li>B. Sign In Sheet – All must sign in with Company Name and Contact Information</li> <li>C. Introduction of PID and WWE staff</li> </ul>	
2.0	<b>REQUEST FOR PROPOSALS</b> <ul style="list-style-type: none"> <li>A. Project was published on March 26, 2021</li> <li>B. DBE, Prevailing Wage, FEMA Funding Requirements do apply</li> <li>C. <b><u>Bids are due Friday, May 7, 2021 by 2pm</u></b></li> <li>D. Bid Documents are available through: <ul style="list-style-type: none"> <li>1. local builders exchanges</li> <li>2. PID website: <a href="https://pidwater.com/rfp">https://pidwater.com/rfp</a></li> <li>3. WWE (Contact Colleen Boak <a href="mailto:colleenb@wwengineers.com">colleenb@wwengineers.com</a>)</li> </ul> </li> <li>D. Content of the PREBID Meeting is meant to be helpful but does not supersede the Bid Documents. Bidders must rely on published Addenda for official answers to questions.</li> <li>E. All questions asked at the PREBID Meeting will be recorded and posted in an Addendum.</li> </ul>	

### 3.0

#### PROJECT OVERVIEW

- A. Installation of 4,500 metered service connections and replacement of up to 1,750 potable water service laterals with new HDPE laterals in locations throughout the PID service area.
- B. 465 calendar day contract – target an average of 300 sites/month
  1. Locations selected for installations under this contract will be determined by the OWNER in collaboration with the Town of Paradise and communicated to the CONTRACTOR. Consecutive installation sites may not be contiguous or in the same general area.
  2. If there is any issue with a particular site that might cause a disruption in the order of locations, Contractor needs to communicate that to the CM or Engineer at soon as it is known.
- C. Progression of work:
  - a) Work zones with multiple addresses
  - b) Individual locations
- D. Assigned addresses will be identified by the ENGINEER as requiring one or more of the following categories of work:
  - a) Service Lateral Installation
  - b) Meter Assembly Installation
  - c) Backflow Preventer Assembly Installation
- E. It is anticipated that there may be a number of sites where conditions dictate that work not proceed further without further direction by the ENGINEER or which may be handed off to PID for completion at the discretion of PID or the ENGINEER.
- F. Payment will be based upon each site's specific conditions and installation.
- G. Meters will be purchased by PID and supplied to the contractor as needed.
- H. Biweekly progress meetings will be held to coordinate progress and discuss upcoming locations. Additional meetings as needed.
- I. Documentation of work completed at each site will be highly important. Contractor shall be responsible for the minimum data collection outlined in the project document. This data will be turned over to PID for their use as well as provide support for progress payments.
- J. Laydown/storage space will not be provided by PID – contractor must make their own local arrangements.
- K. HOUSEKEEPING is a critical component of this project. Sites shall be left in as good or better condition as they were found. The residents of Paradise are still working through recovery from the 2018 Camp Fire and care must be taken to avoid negatively impacting their private property.

	<p>L. There will not be a job walk included as part of today's meeting, but we do encourage you to drive around town and look at conditions and some of the other recovery-related activities currently taking place.</p>
4.0	<p><b>BID ITEMS/SCOPE</b></p> <p>Each site will have varying conditions. The following items are broken out in the bid form to address the variability of project work:</p> <p><b>General Work</b></p> <ol style="list-style-type: none"> <li>1. <b>Project Mobilization and Demobilization</b></li> <li>2. <b>Project Traffic Control</b> <ol style="list-style-type: none"> <li>a. This will vary depending on the address. All must comply with all applicable safety regulations and MUTCD standards.</li> <li>b. Where work zones include multiple sites along a roadway or in an area, there can be some efficiency of traffic control. There will also be individual locations for work which will require their own traffic control devices.</li> <li>b. Coordinate as necessary with other recovery related activities happening in an area (debris removal, etc).</li> <li>c. At no point may both lanes of a roadway be closed to traffic without an approved detour plan coordinated and reviewed by the Town of Paradise.</li> <li>d. Traffic control and roadway conditions will be subject to an encroachment permit with the Town of Paradise and subject to regular inspection by Public Works staff.</li> </ol> </li> </ol> <p><b>Metered Installation</b></p> <ol style="list-style-type: none"> <li>3. <b>Angle Stop Valve</b> <ol style="list-style-type: none"> <li>a. An anticipated 1,300 locations will require removing and resetting an existing angle stop valve.</li> <li>b. An anticipated 300 sites will require furnishing and installation of a new angle stop where one was not previously installed, per the Standard Details.</li> </ol> </li> <li>4. <b>Furnish and Install Meter Box and Cover</b> <ol style="list-style-type: none"> <li>a. Installation of concrete meter boxes sized for either ¾" to 1" meter assemblies or 1½" to 2" meter assemblies in accordance with the Standard Details.</li> <li>b. This shall include the removal and disposal of any remaining meter box or meter still in place following the Camp Fire of 2018.</li> <li>c. If an existing concrete meter box is encountered, coordinate with ENGINEER regarding whether to leave in place and use for the require installation.</li> </ol> </li> <li>5. <b>Install Meter and Meter Interface Unit (MIU)</b> <ol style="list-style-type: none"> <li>a. The meters and meter interface units (MIU) shall be installed according to manufacturer recommendations/instructions (Zenner USA) by CONTRACTOR personnel trained and certified for installation of this equipment by the manufacturer, also in accordance with the Standard Details and outlined in the Specifications.</li> </ol> </li> </ol>

	<p><b><u>Service Lateral Replacement</u></b></p> <p><b>6. Excavation of Existing Corporation Stop</b></p> <p><b>7. Shoring Required (per Service Lateral Installation)</b></p> <p>a. Shore an excavation or trench at a project site location identified by the OWNER, in accordance with all local, state, and federal safety standards. This will apply where excavation or trenching exceed 5-feet or the maximum depth and/or soil conditions outlined in said standards.</p> <p><b>8. Asphalt Restoration</b></p> <p>a. In accordance with the Specifications, as well as the Town of Paradise Standard Details, included in the back of the Contract Documents.</p> <p>b. Asphalt restoration may be phased (cold mix temporary patch, followed by HMA final patch) at the earliest opportunity, to account for weather or efficiency of installing final HMA patching at one time.</p> <p><b>9. Concrete Restoration</b></p> <p>a. In accordance with the Specifications as well as the Standard Details included in the Contract Documents.</p> <p><b>10. Furnish and Install Replacement Service Laterals – Open Trench Installation</b></p> <p>a. Service laterals shall be High-density Polyethylene (HDPE) in 1", 1.5", or 2" sizes, as assigned by the CM</p> <p>b. In accordance with the Standard Details in Volume 2 of the Bid Documents, as well as the Specifications.</p> <p>c. Some service laterals serve single meters, others serve a banked set of meters – there is a detail for each.</p> <p>d. In some cases, the existing corporation stop may be used and adapted. In other cases, a new hot tap will be required.</p> <p>e. Assume average buried depth of 3-feet and average length 25-feet.</p> <p><b>11. Furnish and Install Replacement Service Laterals – Trenchless ("Pulled") Installation</b></p> <p>a. Service laterals shall be High-density Polyethylene (HDPE) in 1", 1.5", or 2" sizes, determined by PID or the ENGINEER based on field conditions and in accordance with the Specifications.</p> <p>b. Same assumptions as Item 10 above.</p> <p><b>12. Furnish and Install Hot Tap Saddle Connections</b></p> <p>a. Wherever possible, existing corporation stops shall be reused. Reuse is possible if the corporation stop is found to be sound and operable and within one size increment of the directed service lateral size to install (example: ¾" corporation stop for a 1" service lateral).</p> <p>b. If the corporation stop is not reusable or not present, the contractor may install a new service saddle and hot tapped connection a minimum 24" from the existing connection. This</p>
--	---

	<p>will apply where it is identified by PID or ENGINEER that the existing corporation stop is not reusable at a particular location.</p> <p><b>13. Furnish RP Backflow Preventer Assembly –</b></p> <p>a. Assumes PID supplies 2,000 1" RP backflow preventer assemblies (those salvaged in the below bid item)</p> <p><b>14. Salvage RP Backflow Prevention Assembly</b></p> <p>a. An estimated 2,000 locations, the RP assembly shall be salvaged and removed from the field in such a way to allow its future reuse.</p> <p>b. PID will reconfigure as necessary, check, and reissue RP backflow devices removed from the field back to the CONTRACTOR for installation at a different site in accordance with Standard Detail PID-15.</p> <p><b>15. Install RP Backflow Prevention Assembly</b></p> <p>a. Install a reduced pressure principle (RP) backflow prevention device at each address assigned by the CM</p> <p><b>16. Test RP Backflow Prevention Assembly</b></p> <p>a. Testing shall be accomplished by a person or persons trained and certified to do so by the CA NB chapter of the American Water Works Association (CA NV AWWA). This shall include documentation as required by the Specifications and transmitted to the ENGINEER.</p> <p><b>17. Furnish and Install Frost Protection Bag for RP Backflow Assembly</b></p> <p>a. Furnish and install a frost protection bag for reach RP backflow prevention assembly installed under this contract.</p> <p><b><u>Required Subcontract</u></b></p> <p><b>18. Zenner Subcontract – Installation of Centralized Transmission Infrastructure for AMI System</b></p> <p>a. Equipment will be provided by PID, and the CONTRACTOR shall be required to subcontract the installation of the centralized transmission infrastructure to the system manufacturer, Zenner USA.</p>
<p><b>5.0</b></p>	<p><b>COMMUNICATION</b></p> <p>A. WWE CM/PM (Colleen Boak) will be the primary point of contact for work planning, execution, contract matters</p> <p>B. Inspectors will be full time on site, with input from PID Operations Staff</p> <p>C. All work shall be inspected prior to closeout or covering. Of particular importance will be connections at mains, tracer wire installation on laterals, pinch points on laterals and meter installation.</p> <p>D. GIS will be used heavily to plan, track, and assign work locations, work zones</p> <p>E. Termination points for service laterals (meter locations) shall be tagged with a GPS device by PID staff prior to contractor assignment.</p>

	<p>Contractor will need to use a similarly accurate device to locate this point for installation.</p> <p>F. PID/WWE staff will maintain and track inventory on meters as they are supplied to the contractor. The contractor must also track materials received.</p> <p>G. PID will be conducting outreach to the community as we plan to work in an area to prepare residents for the disruption.</p>
<b>6.0</b>	<p><b>TARGET SCHEDULE</b></p> <p>A. Sealed Bids for construction services for the Meter Installation and Service Lateral Replacement Phase 2 Project addressed to Paradise Irrigation District, 6332 Clark Road, Paradise, CA 95969 will be received until <b>2:00 p.m., local time, on Friday, May 7, 2021</b>. Any Bids received after the specified time will not be considered. Bids will then be publicly opened and read at 6332 Clark Road.</p> <p>B. PID Board Approval – <b>May 2021</b></p> <p>C. Notice to Proceed – <b>May 2021</b></p> <p>D. Beginning of Services – <b>June 2021</b></p> <p>E. Project Completion – <b>October 2022</b></p>
<b>7.0</b>	<b>QUESTIONS?</b>



MANDATORY PRE-BID MEETING SIGN IN SHEET

WEDNESDAY APRIL 21, 2021

NAME	COMPANY	PHONE	EMAIL
BEY BORBA	FLOWLINE CONTRACTORS INC.	570 919 0368	BORBA@FLOWLINE CONTRACTORS.COM
Jason Steur	Sutton Ent.	209 559 1121	chrp1usur@yahoo.com
Tom Wadden	SUKUT LLC	714 659-0504	twadden@sukut.com
Luis Perez	Viniquerra Construction INC.	209 223 3610	mvvinciguerra@att.net
John Rhein	Durham Pump Inc	530 891 4821	jrhein@dpump.com
SCOTT HAVENS	"	503-341-7641	4scotthavens@ gmail.com
KENT MEIER	SPINIELLO	562 577 5799	KMEIER@SPINIELLO WEST.COM
Steven Dooley	Teichert	(530) 379-3236	estimating@teichert.com
SPENCER MENDEZ	RCI GENERAL ENGINEERING	(530) 682-0368	SPENCERM@RCI6E.COM
Jared Springer	R&R Horn	520-342-8655	estimating@rrhorn.com

## RFP Questions and Answers

---

**1. Will the District consider extending the date on which bids are due?**

*Answer:* Bids will remain due on May 7, 2021 at 2pm.

**2. Will the District consider extending the duration of the project?**

*Answer:* The District has decided to revise the project duration from 465 calendar days to 545 calendar days.

**3. Will the District allow 10 - 12 hour work days or Saturday work?**

*Answer:* At this time, the project work hours will as originally defined in the project documents. There is flexibility for low-risk work (housekeeping, site prep) to take place outside of these defined work hours at the Engineer's discretion. This would exclude activities with a high risk of damage to PID infrastructure or those that require inspector oversight.

**4. Is the District supplying the meters?**

*Answer:* Yes, the District has selected and will purchase the meters under a separate contract with Zenner USA. These will be stored by the District at the PID Corporation Yard, with inventory checked out for installation by the contractor. Records of materials shall be kept by both parties for tracking and auditing purposes.

**5. Is the contractor responsible for hooking up the MIU to the meter and ensuring proper function?**

*Answer:* Yes, the contractor will complete the installation of the meter and MIU in accordance with manufacturer recommendations and using staff trained by the manufacturer. The contractor will use a handheld device which can be rented from Zenner USA to accomplish this installation.

**6. How many services will there be per work zone?**

*Answer:* Work zones will be determined as needed based on density of addresses that need work in an area. They will be scoped to represent approximately equal durations of work time, therefore between 200-300 services/work zone are likely.

**7. Would the contractor potentially have some input on the work zones?**

*Answer:* While meeting the planning needs of the District, the team is interested in feedback from the contractor regarding work zones.

**8. Does the contractor need to reach out directly to Zenner for the sake of staff training on meter installations?**

*Answer:* Yes. The District will not be providing this training. It must be coordinated directly with Zenner USA.

**9. Please confirm that the District, not the contractor, will be responsible for customer communications and outreach.**

*Answer:* Confirmed, the contractor will not be responsible for customer outreach. Questions received in the field from residents may be directed to inspection staff or the project engineer.

**10. How many services per day did the last contractor install?**

*Answer:* During the previous Service Lateral Replacement Project, services installed per day varied based on the length and conditions at each site. An average range would be 3-8. That project did not allow for work on multiple addresses in the same area. That project also required more individual site involvement by PID staff which limited production rates.

**11. Did anyone use directional drilling on the previous Service Lateral contract?**

*Answer:* No, directional drilling was not used on this project. "Pulling" of service laterals using the old pipe to pull through a new pipe was used wherever possible and conditions allowed.

**12. Is it possible to share the addresses which will be addressed by this project so bidders can see the types of roads where they are located?**

*Answer:* Addresses are located throughout the PID service area. Please reference the public GIS map entitled "Water Advisory Lifted Map" on PID's website at:

<https://www.pidwater.com/wqadvisory/40-wq/108-system-map>

This map contains approximately 3,000 of the addresses which will be addressed by this project. The other 1,500 are being confirmed at this time by PID and are not available for reference, but will be spread throughout the PID service area.

**13. Is there an estimate of encroachment permit costs?**

*Answer:* The Town of Paradise has estimated encroachment permit costs for the project at \$46,590 based on an hourly rate of \$119.46 and an estimate of 5 hours per week for 78 work weeks to inspect roadway improvements and traffic control. The contractor will be responsible for this permit and payment will be due to the Town on a quarterly basis and may be invoiced to PID at that interval. Additional hourly Town of Paradise inspection costs incurred based on deficiencies in work product or traffic control will be the responsibility of the contractor.

**14. Can an estimate of the number of hot taps be given based on what PID has seen with the previous project?**

*Answer:* The previous service lateral replacement project had an approximate 50% hot tap rate for service laterals. This rate may differ for this project as the addresses for service laterals will be different.

**15. In the event materials are hard to come by, is there an option to extend the contract?**

*Answer:* The District is prepared to be flexible on contract times if best efforts are made to procure materials and documentation of the issue is made, but industry impacts do not allow for timely procurement.

**16. Is there an average length of a service lateral?**

*Answer:* Yes, 25 ft may be used as an average service lateral length for bidding purposes.

**17. How would overages of materials be handled if the contractor procures large number of materials in preparation for work (example: a particular size of saddles) if not all of them are then installed.**

*Answer:* The District expects best practices be used in ordering materials according to production rates and lead times. In the event that something outside the contractor's control or knowledge, while using documented best practices for materials procurement, occurs causing cost for restocking of extra materials, the District would be willing to review and consider a change order submission.

**18. What was the previous contract for service laterals?**

*Answer:* The previous contract for service lateral replacement was with Sutton Enterprises. That contract was awarded in October 2019 and work ran from November 2019 through March 2021. The amount of that bid was \$4,282,452.50. Service laterals installed under this contract are installed with an angle stop above ground and a flex hose connection to backflow devices. These angle stops will need to be reset below grade, as outlined in the project documents.

**19. What are the details of the Labor Compliance Program and what costs will it impose on the contractor?**

*Answer:* This program is not "under development" by the District and not defined at this time. If there is additional unknown cost to the contractor imposed by this program, it may be addressed at the time the program takes effect. The project does have standard prevailing wage and labor compliance requirements in accordance with California Law.

## Plan Holders List

---

1. **Plan Holders List** – See attached



Meter Installation and Service Lateral Phase 2 Project  
Plan Holders List  
Advertised: 3/26/2021  
Bids Due: 5/7/2021



---

<u>Company</u>	<u>Phone</u>	<u>Email</u>
1 Sutton Enterprises	209-559-1127	<a href="mailto:chrpjason@yahoo.com">chrpjason@yahoo.com</a>
2 Zenner USA	772-285-1035	<a href="mailto:rsanders@zennerusa.com">rsanders@zennerusa.com</a>
3 Visinoni Brothers	530-624-6517	<a href="mailto:dino.visinoni@visinonibrothers.com">dino.visinoni@visinonibrothers.com</a>
4 KW Emerson	209-754-3839	<a href="mailto:dan@kwemerson.com">dan@kwemerson.com</a>
5 R&R Horn, Inc.	530-342-8655	<a href="mailto:Jared@rrhorn.com">Jared@rrhorn.com</a>
6 RCI General Engineering	530-533-3918	<a href="mailto:brittnib@rcige.com">brittnib@rcige.com</a>
7 Sukut Construction	714-540-5351	<a href="mailto:estimating@sukut.com">estimating@sukut.com</a>
8 Vinciguerra Construction	209-223-3610	<a href="mailto:wwinciguerra@att.net">wwinciguerra@att.net</a>
9 Ranger Pipelines, Inc.	415-822-3700	<a href="mailto:grace@rangerpipelines.com">grace@rangerpipelines.com</a>
10 Jason Abel Construction, Inc.	530-824-2022	<a href="mailto:anna@jabelconstruction.com">anna@jabelconstruction.com</a>

## **Revisions to Bidders Checklist 00120 – Use For Final Bid Submission**

1. Bidders Checklist 00120 – See attached

## SECTION 00120

### BIDDER'S CHECKLIST

This checklist has been prepared and furnished to aid Bidders in including all necessary supporting information with their bid. Bidders' submittals shall include, but are not limited to, the following:

<u>Item</u>	<u>Checked</u>
A. Bid Form	_____
B. PWC-100 Contractor DIR Registration Verification Data Form (Available on the Paradise Irrigation District website)	_____
C. Bid Bond	_____
D. Power-of-Attorney for Surety's Agent to execute Bidder's Bond	_____
E. Authority to Sign Proposal if Signature is by Agent Other Than Officer of Corporation, Partner, or Owner	_____
F. Addenda Acknowledged	_____
G. List of Subcontractors	_____
H. Contractor's License Number and Class Provided	_____
I. Confirmed Bond and Insurance Companies Ratings are in accordance with Supplemental Conditions, Par. SC-5.02.A.	_____
J. DBE Subcontractor Participation Form	_____
K. DBE Subcontractor Performance Form	_____
L. DBE Subcontractor Utilization Form	_____
M. Non-Collusion Affidavit	_____
N. EEO Certification	_____
O. EEO Notice	_____
P. Workers' Compensation Certificate	_____

+ + END OF SECTION + +

00120-1



---

## Required Forms – Use For Final Bid Submission

---

1. **Required Forms** – See attached

**Section 00326**  
(Required to Accompany Bid)

**NON-COLLUSION AFFIDAVIT\***

TO BE EXECUTED BY BIDDER AND SUBMITTED WITH BID

State of California

County of \_\_\_\_\_,

\_\_\_\_\_ ; being first duly sworn, deposes and says that he or she is

\_\_\_\_\_ of \_\_\_\_\_ the party making the foregoing bid, that the bid is not made in the interest of, or on behalf of, any undisclosed person, partnership, company, association, organization, or corporation; that the bid is genuine and not collusive or sham; that the bidder has not directly or indirectly colluded, conspired, connived, or agreed with any bidder or anyone else to put in a sham bid, or that anyone shall refrain from bidding; that the bidder has not in any manner, directly or indirectly, sought by agreement, communication, or conference, with anyone to fix the bid price of the bidder or any other bidder, or to fix any overhead, profit, or cost element of the bid price, or of that of any other bidder, or to secure any advantage against the public body awarding the contract of anyone interested in the proposed contract; that all statements contained in the bid are true; and, further, that the bidder has not, directly or indirectly, submitted his or her bid price or any breakdown thereof, or the contents thereof, or divulged information or data relative thereto, or paid, and will not pay, any fee to any corporation, partnership, company association, organization, bid depository, or to any member or agent thereof the effectuate a collusive or sham bid.

By \_\_\_\_\_

Subscribed and sworn to before me on \_\_\_\_\_

\_\_\_\_\_  
(Notary Public)

\*Note: Public Contracts Code 7106 requires this noncollusion affidavit be submitted with a bid for any public works contract of a public entity.

00326-1

THIS PAGE INTENTIONALLY LEFT BLANK

00326-2

**Section 00327**  
(Required to Accompany Bid)

(THE BIDDER'S EXECUTION ON THE SIGNATURE PORTION OF THIS PROPOSAL  
SHALL ALSO CONSTITUTE AN EDORSEMENT AND EXECUTION OF THOSE  
CERTIFICATIONS WHICH ARE A PART OF THIS PROPOSAL)

**Equal Employment Opportunity Certification**

*(The Bidder must fill-in and check the appropriate blank space)*

The bidder \_\_\_\_\_ (Name), proposed  
subcontractor \_\_\_\_\_ (Name), hereby certifies that he/she has \_\_\_\_\_,  
has not \_\_\_\_\_, participated in a previous contract or subcontract subject to the equal opportunity clauses, as required by  
executive order 10925, 11114, or 11246, and that, where required, he has filed with the Joint reporting Committee, the Director of  
the Office of Federal Contract Compliance, a Federal Government contracting or administering agency, or the former President's  
Committee on Equal Opportunity, all reports due under applicable filing requirements.

\_\_\_\_\_

**Note:**

The above certification is required by the Equal Employment Opportunity regulations of the Secretary of Labor (42 CFR 60-1.7(b) (1)), and must be submitted by bidders and proposed subcontractors only in connection with contracts and subcontracts which are subject to the equal opportunity clause. Contracts and subcontracts which are exempt from the equal opportunity clause are set fourth in 41 CFR 60-1.5. (Generally, only contracts or subcontracts of \$10,000 or under are exempt.)

Currently, Standard Form 100 (EE)-1 is the only report required by the Executive Orders or their implementing regulations.

Proposed prime contractors and subcontractors who have participated in a previous contract or subcontract subject to the Executive Orders and have not filed the required reports should note that 41 CFR 60-1.7(b) (1) prevents the awards of contracts and subcontracts unless such contractor submits a report covering the delinquent period or such other period specified by the Federal Highway Administration or by the director, Office of Federal Contract Compliance, U.S. Department of Labor.

THIS PAGE INTENTIONALLY LEFT BLANK

00327-2

## NOTICE TO BE POSTED

### **EQUAL EMPLOYMENT OPPORTUNITY IS THE LAW – DISCRIMINATION IS PROHIBITED BY THE CIVIL RIGHTS ACT OF 1964 AND BY EXECUTIVE ORDER NO. 11246**

Title VII of the Civil Rights Act of 1964 – Administered by:

#### **THE EQUAL EMPLOYMENT OPPORTUNITY COMMISSION**

Prohibits discrimination because of Race, Color, Religion, Sex, or National Origin by Employers with 75 or more employees, by Labor Organizations with a hiring hall of 75 or more members, by Employment Agencies, and by Joint Labor-Management Committees for Apprenticeship or Training. After July 1, 1967, employers and labor organizations with 50 or more employees or members will be covered; after July 1, 1968, those with 25 or more will be covered.

#### **ANY PERSON**

Who believes he or she has been discriminated against

#### **SHOULD CONTACT**

#### **THE EQUAL EMPLOYMENT OPPORTUNITY COMMISSION**

2401 E Street NW, Washington, D.C. 20506

Executive Order No. 11246 – Administered by:

#### **THE OFFICE OF FEDERAL CONTRACT COMPLIANCE PROGRAMS**

Prohibits discrimination because of Race, Color, Religion, Sex, or National Origin, and requires affirmative action to ensure equality of opportunity in all aspects of employment.

By all Federal Government Contractors and Subcontractors, and by Contractors Performing Work Under a Federally Assisted Construction Contract, regardless of the number of employees in either case.

#### **ANY PERSON**

Who believes he or she has been discriminated against

#### **SHOULD CONTACT**

#### **THE OFFICE OF FEDERAL CONTRACT COMPLIANCE PROGRAMS**

U. S. Department of Labor, Washington, D.C. 20210

THIS PAGE INTENTIONALLY LEFT BLANK

## WORKERS' COMPENSATION CERTIFICATE

The Proposer shall execute the following form as required by the California Labor Code, Sections 1860 and 1861:

I am aware of the provisions of Section 3700 of the California Labor Code which require every employer to be insured against liability for workers' compensation or to undertake self-insurance in accordance with the provisions of that code, and on behalf of my firm, I shall comply with such provisions before performing any work for the District.

---

Proposer's Signature

---

Company Name

---

Printed Name

---

Business License Number

---

Title

---

Date



---

## Revisions to Specifications

---

1. **Revise text of Specification Section 00080 from “The Work shall be completed in all respects within 465 calendar days from the date when the Contract Time commences to run.” with the following:**

“The Work shall be completed in all respects within 545 calendar days from the date when the Contract Time commences to run.”
  
2. **Replace Specification Section 00500, Part 3.1.1, with the following:**

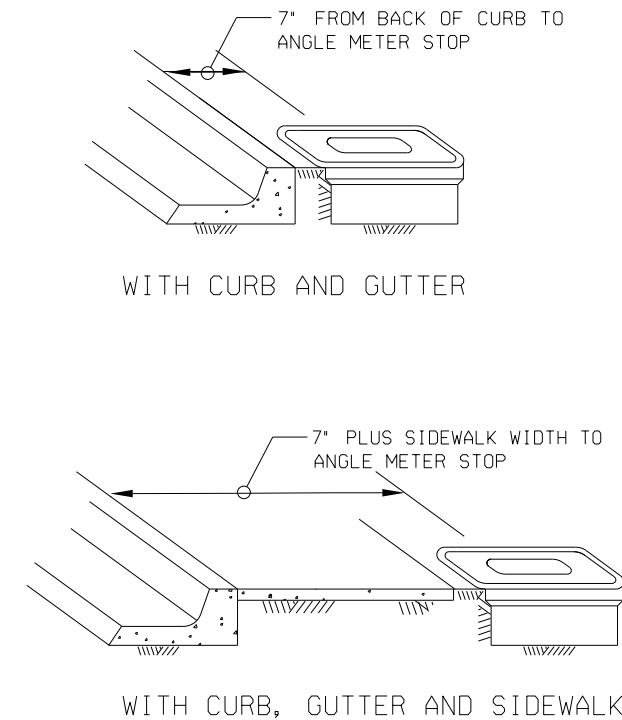
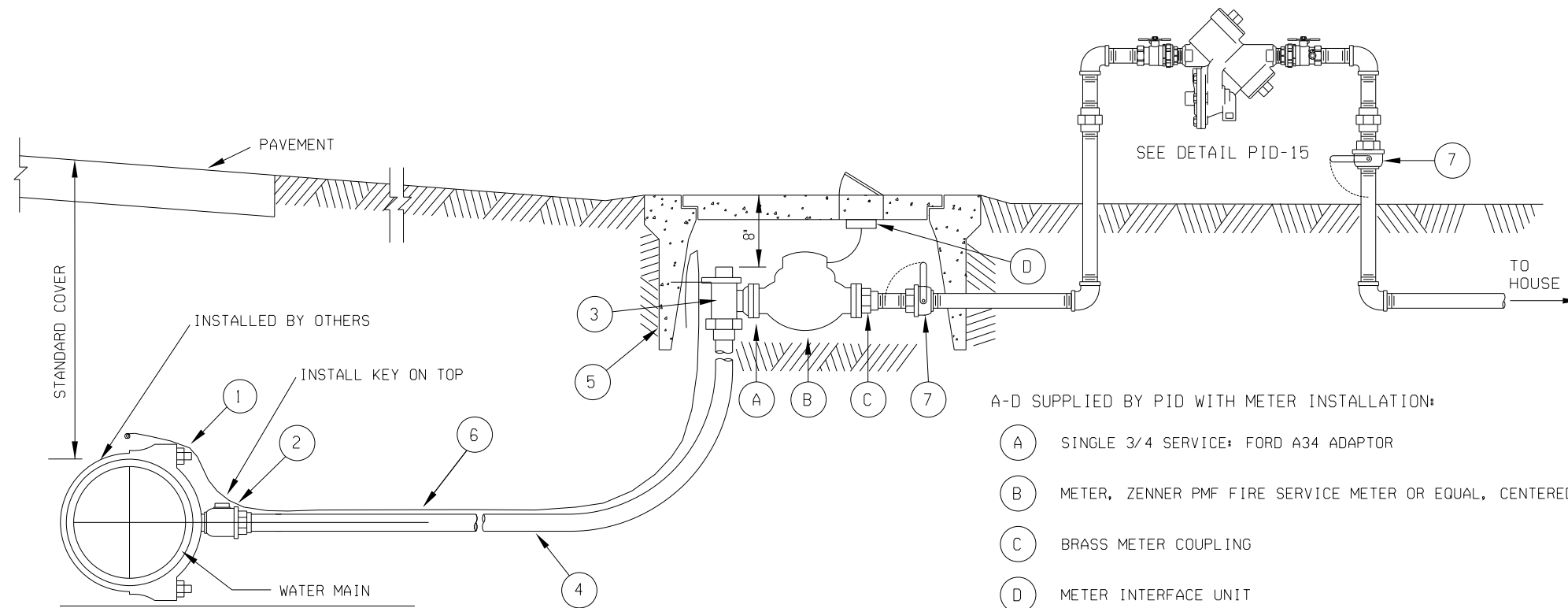
3.1.1 CONTRACTOR will achieve Substantial Completion within 545 calendar days from the date Notice to Proceed is issued, when the Contract Times commence to run as provided in paragraph 2.03 of the General Conditions, and Work will be completed and ready for final payment and acceptance in accordance with paragraph 14.07 of the General Conditions within 60 calendar days of the recording of the Notice of Completion with Butte County.

---

## Revisions to PID Standard Details

---

1. Revised PID-05 and PID-15 Standard Details – See attached

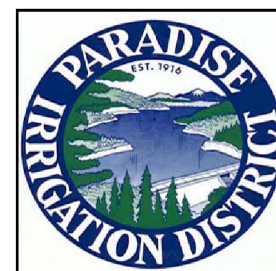


MATERIALS

ITEM NO.	SIZE & DESCRIPTION	MANUFACTURER	SPEC. NO.		
①	DOUBLE S.S. STRAP DUCTILE IRON SERVICE SADDLE W/ I.P. OUTLET	ROMAC	202S		
②	BRONZE BALLCORP STYLE CORPORATION STOP M.I.P. THREAD X COMPRESSION W/PIPE LINER	FORD	1' FB1100-4-Q	1 1/2" FB1100-6-Q	2" FB1100-7-Q
③	BRONZE BALLCORP STYLE ANGLE METER STOP W/ LOCKWING (COMPRESSION TYPE) W/PIPE LINER	FORD	1' BA43-444W-Q	1 1/2" BFA43-666W-Q	2" BFA43-777W-Q
④	HDPE TUBING, COPPER TUBING SIZE (CTS), DIAMETER: 1" OR METER SIZE WHICHEVER IS LARGER.	ASTM D2737, 200 PSI, SDR 9			
⑤	CONCRETE METER BOX AND LID	JENSEN PRECAST	METER SIZE 3/4" - 1"                      1 1/2" - 2"		
⑥	12 AWG SOLID COPPER WIRE W/ TYPE UF INSULATION ATTACHED AT 3 FT INTERVAL WITH A MINIMUM ONE FULL WRAP OF DUCT TAPE. ENSURE WIRE DOES NOT INTERFERE WITH OPERATION OF CORPORATION STOP. COVER ALL BARE WIRE CONNECTIONS WITH ELECTRICAL TAPE. ENSURE WIRE DOES NOT INTERFERE WITH OPERATION OF CORPORATION STOP.		HN1222 BOX HPC1222-L01	HPC1730 METER BOX HPC1730-T22-L02 COVER	
⑦	BRASS LEAD-FREE BALL VALVE	WATTS OR EQUAL	LFFBV-3C (SPECIFY 1", 1 1/2", 2")		

NOTES:

- SERVICE SADDLE SHALL NOT BE INSTALLED WITHIN 24" OF VALVE, COUPLING, JOINT OR FITTING. TAPPED COUPLINGS ARE NOT PERMITTED.
- INSTALL CORPORATION STOP WITH KEY UP IN OPEN POSITION.
- BOX COVER TO BE SET TO CONFORM TO PLANTER GRADE IN UNPAVED AREAS. SURROUNDING GROUND SHALL DRAIN AWAY FROM BOX. IN UNTRAVELED AREAS WHERE DRAINAGE MOVES TOWARD BOX, TOP OF BOX SHALL BE SET 2" ABOVE SURROUNDING GRADE. SET TOP OF METER BOX FLUSH WITH SIDEWALK OR CURB WHERE APPLICABLE.
- THE CORPORATION STOP TAP SHALL BE MADE AS SPECIFIED BY THE PIPE MANUFACTURER'S INSTALLATION GUIDE. ALL TAPS SHALL BE MADE WITH MACHINE GUIDE OR PILOT TAP.
- THE WATER SERVICE SHALL EXTEND PERPENDICULAR TO THE CENTERLINE OF THE STREET FROM THE WATER MAIN TO THE METER STOP. UNLESS APPROVED BY PID.
- METER BOX SHALL BE SET BEHIND SIDEWALK WHERE SIDEWALK IS ADJACENT TO CURB.
- HDPE TUBING SHALL NOT BE SPLICED.
- FOR MULTIPLE METER SERVICE INSTALLATION REFER TO STANDARD DRAWING PID-06.

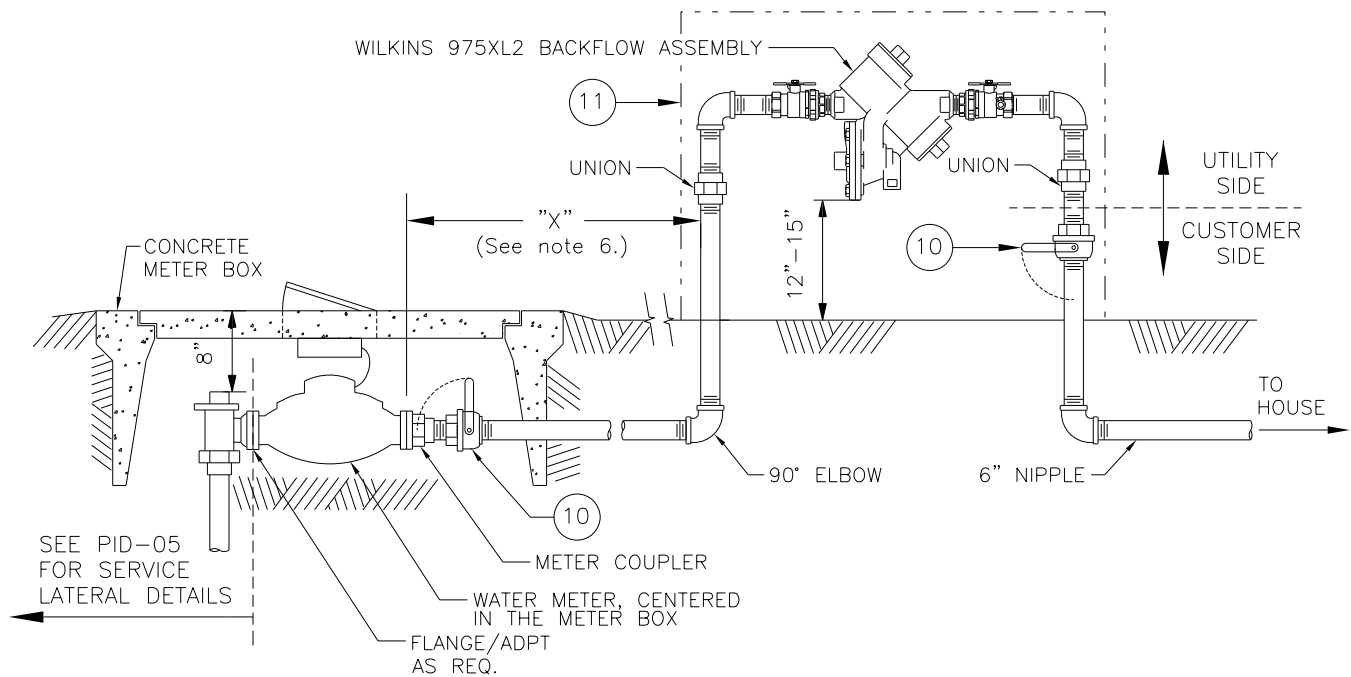


PARADISE IRRIGATION DISTRICT  
STANDARD DRAWING

POLYETHYLENE SERVICE INSTALLATION  
FOR 3/4" TO 2" METERS

PID-05  
SHEET 1 OF 1

DRAWN  
WWE  
CHECKED  
CDB  
DATE  
APRIL 2021  
NO SCALE



## NOTES:

1. BACKFLOW PREVENTION REQUIREMENTS APPLY AT EACH SERVICE CONNECTION. CONTACT PID FOR QUESTIONS REGARDING BACKFLOW PREVENTION INSTALLATION AND POLICY REQUIREMENTS.
2. BACKFLOW PREVENTION ASSEMBLY SHALL BE A REDUCED PRESSURE PRINCIPLE (RP) ASSEMBLY CERTIFIED BY USC FOUNDATION FOR CROSS CONNECTION CONTROL AND HYDRAULIC RESEARCH. ASSEMBLY SHALL BE LOW LEAD IN COMPLIANCE WITH NSF 61, WILKINS 975XL2.
3. NO TAPS/ CONNECTIONS ARE PERMITTED ON THE UTILITY SIDE OF THE BACKFLOW PREVENTION ASSEMBLY. BACKFLOW PREVENTION ASSEMBLY TEST COCKS SHALL BE USED FOR TEST PURPOSES BY CERTIFIED PERSONNEL ONLY.
4. ALL UTILITY SIDE PIPING AND FITTINGS DOWNSTREAM OF THE METER COUPLER SHALL BE METALLIC AND MECHANICALLY JOINED. UNIONS SHALL BE INSTALLED ON VERTICAL RISERS.
5. DISTANCE "X" SHALL BE ENCASED IN SCHEDULE 40 GALVANIZED PIPE WITH MINIMUM ANNULAR SPACE, FROM THE METER BOX TO THE POINT WHERE THE PIPE LEAVES THE GROUND.
6. UPON COMPLETION OF INSTALLATION AND PRIOR TO RECEIVING SERVICE THE BACKFLOW PREVENTION ASSEMBLY MUST PASS FUNCTIONAL TESTING PERFORMED BY A DISTRICT APPROVED CA-NV AWWA CERTIFIED BACKFLOW ASSEMBLY PREVENTION TESTER.
7. BACKFLOW PREVENTION ASSEMBLY SHALL BE INSTALLED IN DIRECT ALIGNMENT TO THE FLOW OF METER ORIENTATION. INSTALLATION OF A BACKFLOW PREVENTION ASSEMBLY PERPENDICULAR TO THE FLOW OF METER ORIENTATION SHALL ONLY BE ALLOWED UPON PRIOR APPROVAL BY PID. IF PERPENDICULAR ORIENTATION IS APPROVED SWING JOINT MAY BE USED, FITTINGS SHALL BE KEPT TO A MINIMUM.
8. BODY OF BACKFLOW PREVENTION ASSEMBLY SHALL BE LEVEL SO THAT NO BACK PRESSURE IS APPLIED ON EITHER INTERNAL CHECK VALVES. ADJUST VERTICAL RISERS AS NEEDED TO ACHIEVE THIS.
9. THE BOTTOMMOST PORTION OF THE BODY OF THE BACKFLOW PREVENTION ASSEMBLY SHALL BE A MINIMUM OF 12" AND A MAXIMUM OF 15" ABOVE GRADE.
10. BALL VALVE 10 SHALL BE BRASS LEAD-FREE, WATTS LFFBV-3C OR EQUAL. BALL VALVE IN METER BOX SHALL BE INSTALLED WITH HANDLE IN THE CLOSED POSITION FACING UP. BALL VALVE ON RISER OF BACKFLOW PREVENTION ASSEMBLY SHALL BE INSTALLED WITH HANDLE IN THE CLOSED POSITION FACING THE INSIDE OF THE BACKFLOW PREVENTION ASSEMBLY.
11. A FROST PROTECTION BAG SHALL BE INCLUDED AS PART OF THE INSTALLATION OF THE BACKFLOW PREVENTION ASSEMBLY. B&E SECURITY COVERS 24"x24" INSULATION COVER (SC2424) FOR 1" BACKFLOW PREVENTION ASSEMBLY, 36"x24" (SC3624) FOR 1.5" AND 2" BACKFLOW PREVENTION ASSEMBLIES.



## PARADISE IRRIGATION DISTRICT STANDARD DRAWING

RP INSTALLATION FOR DOMESTIC  
CONNECTIONS UP TO 2"  
(FOR DISTRICT OWNED BACKFLOW PREVENTION DEVICES)

## PID-15

SHEET 1 OF 1

DRAWN WWE CHECKED CDB  
DATE  
APRIL 2021  
NO SCALE

---

## Davis-Bacon Act Wage Determinations

---

1. See the attached Wage Determinations (Modification Number: 8; Publication Date: 04/23/2021) as required for DWSRF projects.

## **Davis-Bacon Act Wage Determinations**

"General Decision Number: CA20210007 04/23/2021

Superseded General Decision Number: CA20200007

State: California

Construction Types: Building, Heavy (Heavy and Dredging) and Highway

Counties: Alpine, Amador, Butte, Colusa, El Dorado, Glenn, Lassen, Marin, Modoc, Napa, Nevada, Placer, Plumas, Sacramento, Shasta, Sierra, Siskiyou, Solano, Sonoma, Sutter, Tehama, Trinity, Yolo and Yuba Counties in California.

BUILDING CONSTRUCTION PROJECTS (excluding Amador County only);  
DREDGING CONSTRUCTION PROJECTS (does not include hopper dredge work); HEAVY CONSTRUCTION PROJECTS (does not include water well drilling); AND HIGHWAY CONSTRUCTION PROJECTS

Note: Under Executive Order (EO) 13658, an hourly minimum wage of \$10.95 for calendar year 2021 applies to all contracts subject to the Davis-Bacon Act for which the contract is awarded (and any solicitation was issued) on or after January 1, 2015. If this contract is covered by the EO, the contractor must pay all workers in any classification listed on this wage determination at least \$10.95 per hour (or the applicable wage rate listed on this wage determination, if it is higher) for all hours spent performing on the contract in calendar year

2021. If this contract is covered by the EO and a classification considered necessary for performance of work on the contract does not appear on this wage determination, the contractor must pay workers in that classification at least the wage rate determined through the conformance process set forth in 29 CFR 5.5(a)(1)(ii) (or the EO minimum wage rate, if it is higher than the conformed wage rate). The EO minimum wage rate will be adjusted annually. Please note that this EO applies to the above-mentioned types of contracts entered into by the federal government that are subject to the Davis-Bacon Act itself, but it does not apply to contracts subject only to the Davis-Bacon Related Acts, including those set forth at 29 CFR 5.1(a)(2)-(60). Additional information on contractor requirements and worker protections under the EO is available at [www.dol.gov/whd/govcontracts](http://www.dol.gov/whd/govcontracts).

Modification Number	Publication Date
---------------------	------------------

0	01/01/2021
1	01/08/2021
2	01/15/2021
3	01/22/2021
4	02/05/2021
5	02/19/2021
6	02/26/2021
7	04/02/2021
8	04/23/2021

ASBE0016-001 01/01/2021

AREA 1: MARIN, NAPA, SAN BENITO, SAN FRANCISCO, SOLANO, &

## SONOMA COUNTIES

AREA 2: ALPINE, AMADOR, BUTTE, COLUSA, EL DORADO, GLENN,  
MODOC, NEVADA, PLACER, PLUMAS, SACRAMENTO, SHASTA, SIERRA,  
SISKIYOU, SUTTER, TEHEMA, TRINITY, YOLO, & YUBA COUNTIES

	Rates	Fringes
Asbestos Workers/Insulator (Includes the application of all insulating materials, Protective Coverings, Coatings, and Finishes to all types of mechanical systems)		
Area 1.....	\$ 74.16	23.58
Area 2.....	\$ 46.81	33.50

-----  
ASBE0016-007 01/01/2021

AREA 1 : ALPINE, AMADOR, BUTTE, COLUSA, EL DORADO, GLENN,  
LASSEN, MODOC, NEVADA, PLACER, PLUMAS, SACRAMENTO, SHASTA,  
SIERRA, SISKIYOU, SOLANO, SONOMA, SUTTER, TEHAMA, TRINITY, YOLO  
& YUBA COUNTIES

AREA 2: MARIN & NAPA COUNTIES

	Rates	Fringes
Asbestos Removal		



worker/hazardous material  
handler (Includes  
preparation, wetting,  
stripping, removal,  
scrapping, vacuuming, bagging  
and disposing of all  
insulation materials from  
mechanical systems, whether  
they contain asbestos or not)

AREA 1.....	\$ 30.45	10.60
AREA 2.....	\$ 36.53	9.27

-----  
BOIL0549-002 10/01/2016

	Rates	Fringes
--	-------	---------

BOILERMAKER

(1) Marin & Solano Counties..	\$ 43.28	37.91
(2) Remaining Counties.....	\$ 39.68	35.71

-----  
BRCA0003-001 08/01/2020

	Rates	Fringes
--	-------	---------

MARBLE FINISHER.....	\$ 36.53	17.08
----------------------	----------	-------

-----  
BRCA0003-004 05/01/2019

AREA 1: ALPINE, AMADOR, BUTTE, COLUSA, EL DORADO, GLENN,  
LASSEN, MODOC, NEVADA, PLACER, PLUMAS, SACRAMENTO, SHASTA,  
SIERRA, SUTTER, TEHAMA, YOLO AND YUBA COUNTIES

AREA 2: MARIN, NAPA, SISKIYOU, SOLANO, SONOMA AND TRINITY  
COUNTIES

	Rates	Fringes
BRICKLAYER		
AREA 1.....	\$ 43.24	21.63
AREA 2.....	\$ 45.92	26.70

SPECIALTY PAY:

(A) Underground work such as tunnel work, sewer work, manholes, catch basins, sewer pipes and telephone conduit shall be paid \$1.25 per hour above the regular rate. Work in direct contact with raw sewage shall receive \$1.25 per hour in addition to the above.

(B) Operating a saw or grinder shall receive \$1.25 per hour above the regular rate.

(C) Gunite nozzle person shall receive \$1.25 per hour above the regular rate.

-----

BRCA0003-008 07/01/2019

	Rates	Fringes
TERRAZZO FINISHER.....	\$ 37.58	17.33
TERRAZZO WORKER/SETTER.....	\$ 48.53	26.84

-----

BRCA0003-010 04/01/2019

Rates      Fringes

TILE FINISHER

Area 1.....	\$ 27.31	14.75
Area 2.....	\$ 27.10	16.50
Area 3.....	\$ 29.94	16.38
Area 4.....	\$ 28.06	15.82

Tile Layer

Area 1.....	\$ 45.51	17.64
Area 2.....	\$ 45.15	19.06
Area 3.....	\$ 49.90	19.16
Area 4.....	\$ 46.77	19.08

AREA 1: Butte, Colusa, El Dorado, Glenn, Lassen, Modoc,  
Nevada, Placer, Plumas, Sacramento, Shasta, Sierra, Sutter,  
Tehema, Yolo, Yuba

AREA 2: Alpine, Amador

AREA 3: Marin, Napa, Solano, Siskiyou

AREA 4: Sonoma

-----

BRCA0003-014 08/01/2020

Rates      Fringes

MARBLE MASON.....	\$ 51.30	28.47
-------------------	----------	-------

-----

CARP0034-001 07/01/2020

Rates      Fringes

## Diver

Assistant Tender, ROV

Tender/Technician.....\$ 51.90	34.02
--------------------------------	-------

Diver standby.....\$ 58.09	34.02
----------------------------	-------

Diver Tender.....\$ 57.09	34.02
---------------------------	-------

Diver wet.....\$ 101.42	34.02
-------------------------	-------

Manifold Operator (mixed

gas).....\$ 62.09	34.02
-------------------	-------

Manifold Operator (Standby).\$ 57.09	34.02
--------------------------------------	-------

## DEPTH PAY (Surface Diving):

050 to 100 ft    \$2.00 per foot

101 to 150 ft    \$3.00 per foot

151 to 220 ft    \$4.00 per foot

221 ft.-deeper    \$5.00 per foot

## SATURATION DIVING:

The standby rate shall apply until saturation starts. The saturation diving rate applies when divers are under pressure continuously until work task and decompression are complete. The diver rate shall be paid for all saturation hours.

## DIVING IN ENCLOSURES:

Where it is necessary for Divers to enter pipes or tunnels, or other enclosures where there is no vertical ascent, the following premium shall be paid: Distance traveled from entrance 26 feet to 300 feet: \$1.00 per foot. When it is necessary for a diver to enter any pipe, tunnel or other enclosure less than 48''' in height, the premium will be

\$1.00 per foot.

WORK IN COMBINATION OF CLASSIFICATIONS:

Employees working in any combination of classifications within the diving crew (except dive supervisor) in a shift are paid in the classification with the highest rate for that shift.

-----  
CARP0034-003 07/01/2020

	Rates	Fringes
Piledriver.....	\$ 51.90	34.02

-----  
CARP0035-001 08/01/2020

AREA 1: MARIN, NAPA, SOLANO & SONOMA

AREA 3: SACRAMENTO, WESTERN EL DORADO (Territory west of and including highway 49 and the territory inside the city limits of Placerville), WESTERN PLACER (Territory west of and including highway 49), & YOLO

AREA 4: ALPINE, BUTTE, COLUSA, EASTERN EL DORADO, GLENN, LASSEN, MODOC, NEVADA, EASTERN PLACER, PLUMAS, SHASTA, SIERRA, SISKIYOU, SUTTER, TEHAMA, TRINITY, & YUBA

	Rates	Fringes
--	-------	---------

Drywall Installers/Lathers:

Area 1.....	\$ 52.65	31.26
Area 3.....	\$ 47.27	31.26
Area 4.....	\$ 45.92	31.26

Drywall Stocker/Scrapper

Area 1.....	\$ 26.33	18.22
Area 3.....	\$ 23.64	18.22
Area 4.....	\$ 22.97	18.22

---

CARP0035-009 07/01/2020

Marin County

Rates	Fringes
-------	---------

CARPENTER

Bridge Builder/Highway		
Carpenter.....	\$ 52.65	30.82
Hardwood Floorlayer, Shingler, Power Saw Operator, Steel Scaffold & Steel Shoring Erector, Saw Filer.....	\$ 52.80	30.82
Journeyman Carpenter.....	\$ 52.65	30.82
Millwright.....	\$ 52.75	32.41

---

CARP0035-010 07/01/2020

AREA 1: Marin, Napa, Solano & Sonoma Counties

AREA 2: Monterey, San Benito and Santa Cruz

AREA 3: Alpine, Butte, Colusa, El Dorado, Glenn, Lassen, Modoc,  
Nevada, Placer, Plumas, Sacramento, Shasta, Sierra, Siskiyou,  
Sutter, Tehama, Trinity, Yolo & Yuba counties

	Rates	Fringes
--	-------	---------

#### Modular Furniture Installer

##### Area 1

Installer.....	\$ 28.76	22.53
Lead Installer.....	\$ 32.21	23.03
Master Installer.....	\$ 36.43	23.03

##### Area 2

Installer.....	\$ 26.11	22.53
Lead Installer.....	\$ 29.08	23.03
Master Installer.....	\$ 32.71	23.03

##### Area 3

Installer.....	\$ 25.16	22.53
Lead Installer.....	\$ 27.96	23.03
Master Installer.....	\$ 31.38	23.03

-----  
CARP0046-001 07/01/2020

El Dorado (West), Placer (West), Sacramento and Yolo Counties

	Rates	Fringes
--	-------	---------

#### Carpenters

##### Bridge Builder/Highway

Carpenter.....	\$ 52.65	30.82
----------------	----------	-------

Hardwood Floorlayer, Shingler, Power Saw Operator, Steel Scaffold & Steel Shoring Erector, Saw Filer.....	\$ 46.92	30.82
Journeyman Carpenter.....	\$ 46.77	30.82
Millwright.....	\$ 49.27	32.41

Footnote: Placer County (West) includes territory West of and including Highway 49 and El Dorado County (West) includes territory West of and including Highway 49 and territory inside the city limits of Placerville.

-----  
 CARP0046-002 07/01/2020

Alpine, Colusa, El Dorado (East), Nevada, Placer (East),  
 Sierra, Sutter and Yuba Counties

	Rates	Fringes
Carpenters		
Bridge Builder/Highway Carpenter.....	\$ 52.65	30.82
Hardwood Floorlayer, Shingler, Power Saw Operator, Steel Scaffold & Steel Shoring Erector, Saw Filer.....	\$ 45.57	30.82
Journeyman Carpenter.....	\$ 45.42	30.82



Millwright.....	\$ 47.92	32.41
-----------------	----------	-------

-----

CARP0152-003 07/01/2020

Amador County

	Rates	Fringes
--	-------	---------

Carpenters

Bridge Builder/Highway

Carpenter.....	\$ 52.65	30.82
----------------	----------	-------

Hardwood Floorlayer,

Shingler, Power Saw

Operator, Steel Scaffold &

Steel Shoring Erector, Saw

Filer.....	\$ 45.57	30.82
------------	----------	-------

Journeyman Carpenter.....	\$ 45.42	30.82
---------------------------	----------	-------

Millwright.....	\$ 47.92	32.41
-----------------	----------	-------

-----

CARP0180-001 07/01/2020

Solano County

	Rates	Fringes
--	-------	---------

Carpenters

Bridge Builder/Highway

Carpenter.....	\$ 52.65	30.82
----------------	----------	-------

Hardwood Floorlayer,

Shingler, Power Saw

Operator, Steel Scaffold &

Steel Shoring Erector, Saw		
Filer.....	\$ 52.80	30.82
Journeyman Carpenter.....	\$ 52.65	30.82
Millwright.....	\$ 52.75	32.41

-----

CARP0751-001 07/01/2020

Napa and Sonoma Counties

Rates	Fringes
-------	---------

Carpenters

Bridge Builder/Highway		
Carpenter.....	\$ 52.65	30.82
Hardwood Floorlayer,		
Shingler, Power Saw		
Operator, Steel Scaffold &		
Steel Shoring Erector, Saw		
Filer.....	\$ 52.80	30.82
Journeyman Carpenter.....	\$ 52.65	30.82
Millwright.....	\$ 52.75	32.41

-----

CARP1599-001 07/01/2020

Butte, Glenn, Lassen, Modoc, Plumas, Shasta, Siskiyou, Tehama  
and Trinity Counties

Rates	Fringes
-------	---------

Carpenters

Bridge Builder/Highway

Carpenter.....\$ 52.65            30.82

Hardwood Floorlayer,

Shingler, Power Saw

Operator, Steel Scaffold &

Steel Shoring Erector, Saw

Filer.....\$ 45.57            30.82

Journeyman Carpenter.....\$ 45.42            30.82

Millwright.....\$ 47.92            32.41

-----

ELEC0180-001 06/01/2020

NAPA AND SOLANO COUNTIES

Rates            Fringes

CABLE SPLICER.....\$ 58.51            24.74

ELECTRICIAN.....\$ 52.01            24.54

-----

ELEC0180-003 12/01/2020

NAPA AND SOLANO COUNTIES

Rates            Fringes

Sound & Communications

Installer.....\$ 42.11            22.41

Technician.....\$ 48.43            22.60

SCOPE OF WORK INCLUDES-

SOUND & VOICE TRANSMISSION (Music, Intercom, Nurse Call,

Telephone); FIRE ALARM SYSTEMS [excluding fire alarm work when installed in raceways (including wire and cable pulling) and when performed on new or major remodel building projects or jobs], TELEVISION & VIDEO SYSTEMS, SECURITY SYSTEMS, COMMUNICATIONS SYSTEMS that transmit or receive information and/or control systems that are intrinsic to the above.

EXCLUDES-

Excludes all other data systems or multiple systems which include control function or power supply; excludes installation of raceway systems, line voltage work, industrial work, life-safety systems (all buildings having floors located more than 75' above the lowest floor level having building access); excludes energy management systems.

-----

ELEC0340-002 02/01/2018

ALPINE, AMADOR, BUTTE, COLUSA, EL DORADO, GLENN, LASSEN, NEVADA, PLACER, PLUMAS, SACRAMENTO, TRINITY, YOLO, YUBA COUNTIES

Rates	Fringes
-------	---------

Communications System

Sound & Communications

Installer.....\$ 29.35	3%+15.35
------------------------	----------

Sound & Communications

Technician.....\$ 33.75	3%+15.35
-------------------------	----------

## SCOPE OF WORK

Includes the installation testing, service and maintenance, of the following systems which utilize the transmission and/or transference of voice, sound, vision and digital for commercial, education, security and entertainment purposes for the following TV monitoring and surveillance, background-foreground music, intercom and telephone interconnect, inventory control systems, microwave transmission, multi-media, multiplex, nurse call system, radio page, school intercom and sound, burglar alarms, and low voltage master clock systems.

### A. SOUND AND VOICE TRANSMISSION/TRANSFERENCE SYSTEMS

Background foreground music Intercom and telephone interconnect systems, Telephone systems, Nurse call systems, Radio page systems, School intercom and sound systems, Burglar alarm systems, Low voltage master clock systems, Multi-media/multiplex systems, Sound and musical entertainment systems, RF systems, Antennas and Wave Guide.

### B. FIRE ALARM SYSTEMS

Installation, wire pulling and testing

C. TELEVISION AND VIDEO SYSTEMS    Television monitoring and surveillance systems, Video security systems, Video entertainment systems, Video educational systems, Microwave transmission systems, CATV and CCTV

D. SECURITY SYSTEMS    Perimeter security systems

Vibration sensor systems    Card access systems    Access  
control systems    Sonar/infrared monitoring equipment

E. COMMUNICATIONS SYSTEMS THAT TRANSMIT OR RECEIVE  
INFORMATION AND/OR CONTROL SYSTEMS THAT ARE INTRINSIC TO  
THE ABOVE LISTED SYSTEMS    SCADA (Supervisory Control and  
Data Acquisition)    PCM (Pulse Code Modulation)

Inventory Control Systems    Digital Data Systems

Broadband and Baseband and Carriers    Point of Sale

Systems    VSAT Data Systems    Data Communication

Systems    RF and Remote Control Systems    Fiber Optic

Data Systems    WORK EXCLUDED Raceway systems are not covered

(excluding Ladder-Rack for the purpose of the above listed  
systems). Chases and/or nipples (not to exceed 10 feet)

may be installed on open wiring systems. Energy management  
systems. SCADA (Supervisory Control and Data Acquisition)

when not intrinsic to the above listed systems (in the  
scope). Fire alarm systems when installed in raceways

(including wire and cable pulling) shall be performed at

the electrician wage rate, when either of the following two

(2) conditions apply:

1. The project involves new or major remodel building trades  
construction.

2. The conductors for the fire alarm system are installed in  
conduit.

-----

ELEC0340-003 02/01/2021

ALPINE (West of Sierra Mt. Watershed), AMADOR, BUTTE, COLUSA,  
EL DORADO (West of Sierra Mt. Watershed), GLENN, LASSEN, NEVADA

(West of Sierra Mt. Watershed), PLACER, PLUMAS, SACRAMENTO,  
SHASTA, SIERRA (West of Sierra Mt. Watershed), SUTTER, TEHAMA,  
TRINITY, YOLO & YUBA COUNTIES

	Rates	Fringes
--	-------	---------

ELECTRICIAN

Remaining area.....	\$ 41.56	32.49
Sierra Army Depot, Herlong..	\$ 48.83	18.54
Tunnel work.....	\$ 41.01	18.54

CABLE SPLICER: Receives 110% of the Electrician basic hourly  
rate.

-----

ELEC0401-005 07/01/2020

ALPINE (east of the main watershed divide), EL DORADO (east of  
the main watershed divide), NEVADA (east of the main  
watershed), PLACER (east of the main watershed divide) and  
SIERRA (east of the main watershed divide) COUNTIES:

	Rates	Fringes
--	-------	---------

ELECTRICIAN.....	\$ 41.50	20.17
------------------	----------	-------

ZONE RATE:

70-90 miles - \$8.00 per hour

91+ miles - \$10.00 per hour

-----  
ELEC0551-004 06/01/2020

MARIN AND SONOMA COUNTIES

	Rates	Fringes
ELECTRICIAN.....	\$ 52.40	3%+23.31

-----

ELEC0551-005 12/21/2020

MARIN & SONOMA COUNTIES

	Rates	Fringes
Sound & Communications		
Installer.....	\$ 42.11	22.41
Technician.....	\$ 48.43	22.60

SCOPE OF WORK INCLUDES-

SOUND & VOICE TRANSMISSION (Music, Intercom, Nurse Call, Telephone); FIRE ALARM SYSTEMS [excluding fire alarm work when installed in raceways (including wire and cable pulling) and when performed on new or major remodel building projects or jobs],

TELEVISION & VIDEO SYSTEMS, SECURITY SYSTEMS, COMMUNICATIONS SYSTEMS that transmit or receive information and/or control systems that are intrinsic to the above.



EXCLUDES-

Excludes all other data systems or multiple systems which include control function or power supply; excludes installation of raceway systems, line voltage work, industrial work, life-safety systems (all buildings having floors located more than 75' above the lowest floor level having building access); excludes energy management systems.

-----  
ELEC0659-006 01/01/2021

DEL NORTE, MODOC and SISKIYOU COUNTIES

	Rates	Fringes
ELECTRICIAN.....	\$ 38.49	17.74

-----

ELEC0659-008 02/01/2019

DEL NORTE, MODOC & SISKIYOU COUNTIES

	Rates	Fringes
Line Construction		
(1) Cable Splicer.....	\$ 59.09	20.22
(2) Lineman, Pole Sprayer, Heavy Line Equipment Man....	\$ 52.76	19.96
(3) Tree Trimmer.....	\$ 31.10	11.32
(4) Line Equipment Man.....	\$ 52.76	19.96
(5) Powdermen,		

Jackhammermen.....	\$ 33.80	13.35
(6) Groundman.....	\$ 33.24	14.79

-----

ELEC1245-004 06/01/2020

ALL COUNTIES EXCEPT DEL NORTE, MODOC & SISKIYOU

Rates	Fringes
-------	---------

LINE CONSTRUCTION

(1) Lineman; Cable splicer..	\$ 59.14	20.78
(2) Equipment specialist (operates crawler tractors, commercial motor vehicles, backhoes, trenchers, cranes (50 tons and below), overhead & underground distribution line equipment).....	\$ 47.24	19.59
(3) Groundman.....	\$ 36.12	19.19
(4) Powderman.....	\$ 51.87	18.79

HOLIDAYS: New Year's Day, M.L. King Day, Memorial Day,  
Independence Day, Labor Day, Veterans Day, Thanksgiving Day  
and day after Thanksgiving, Christmas Day

-----

ELEV0008-001 01/01/2021

Rates	Fringes
-------	---------

ELEVATOR MECHANIC.....\$ 72.10      35.825+a+b

FOOTNOTE:

a. PAID VACATION: Employer contributes 8% of regular hourly rate as vacation pay credit for employees with more than 5 years of service, and 6% for 6 months to 5 years of service.

b. PAID HOLIDAYS: New Year's Day, Memorial Day, Independence Day, Labor Day, Veterans' Day, Thanksgiving Day, Friday after Thanksgiving, and Christmas Day.

-----  
ENGI0003-008 07/20/2020

Rates      Fringes

Dredging: (DREDGING:

CLAMSHELL & DIPPER DREDGING;

HYDRAULIC SUCTION DREDGING:)

AREA 1:

(1) Leverman.....\$ 49.88      34.35

(2) Dredge Dozer; Heavy  
duty repairman.....\$ 44.92      34.35

(3) Booster Pump  
Operator; Deck  
Engineer; Deck mate;  
Dredge Tender; Winch  
Operator.....\$ 43.80      34.35

(4) Bargeman; Deckhand;  
Fireman; Leveehand; Oiler..\$ 40.50      34.35

AREA 2:

(1) Leverman.....\$ 51.88      34.35

(2) Dredge Dozer; Heavy		
duty repairman.....	\$ 46.92	34.35
(3) Booster Pump		
Operator; Deck		
Engineer; Deck mate;		
Dredge Tender; Winch		
Operator.....	\$ 45.80	34.35
(4) Bargeman; Deckhand;		
Fireman; Leveehand; Oiler..	\$ 42.50	34.35

#### AREA DESCRIPTIONS

AREA 1: ALAMEDA,BUTTE, CONTRA COSTA, KINGS, MARIN, MERCED,  
NAPA, SACRAMENTO, SAN BENITO, SAN FRANCISCO, SAN JOAQUIN,  
SAN MATEO, SANTA CLARA, SANTA CRUZ, SOLANO, STANISLAUS,  
SUTTER, YOLO, AND YUBA COUNTIES

#### AREA 2: MODOC COUNTY

THE REMAINGING COUNTIES ARE SPLIT BETWEEN AREA 1 AND AREA 2  
AS NOTED BELOW:

#### ALPINE COUNTY:

Area 1: Northernmost part

Area 2: Remainder

#### CALAVERAS COUNTY:

Area 1: Remainder

Area 2: Eastern part

#### COLUSA COUNTY:

Area 1: Eastern part

Area 2: Remainder

ELDORADO COUNTY:

Area 1: North Central part

Area 2: Remainder

FRESNO COUNTY:

Area 1: Remainder

Area 2: Eastern part

GLENN COUNTY:

Area 1: Eastern part

Area 2: Remainder

LASSEN COUNTY:

Area 1: Western part along the Southern portion of border  
with Shasta County

Area 2: Remainder

MADERA COUNTY:

Area 1: Except Eastern part

Area 2: Eastern part

MARIPOSA COUNTY

Area 1: Except Eastern part

Area 2: Eastern part

MONTERREY COUNTY

Area 1: Except Southwestern part

Area 2: Southwestern part

NEVADA COUNTY:

Area 1: All but the Northern portion along the border of  
Sierra County

Area 2: Remainder

PLACER COUNTY:

Area 1: All but the Central portion

Area 2: Remainder

PLUMAS COUNTY:

Area 1: Western portion

Area 2: Remainder

SHASTA COUNTY:

Area 1: All but the Northeastern corner

Area 2: Remainder

SIERRA COUNTY:

Area 1: Western part

Area 2: Remainder

SISKIYOU COUNTY:

Area 1: Central part

Area 2: Remainder

SONOMA COUNTY:

Area 1: All but the Northwestern corner

Area 2: Remainder

TEHAMA COUNTY:

Area 1: All but the Western border with Mendocino & Trinity  
Counties

Area 2: Remainder

TRINITY COUNTY:

Area 1: East Central part and the Northeastern border with  
Shasta County

Area 2: Remainder

TUOLUMNE COUNTY:

Area 1: Except Eastern part

Area 2: Eastern part

-----  
ENGI0003-019 06/29/2020

SEE AREA DESCRIPTIONS BELOW

	Rates	Fringes
OPERATOR: Power Equipment		
(LANDSCAPE WORK ONLY)		
GROUP 1		
AREA 1.....	\$ 39.95	30.28
AREA 2.....	\$ 41.95	30.28
GROUP 2		
AREA 1.....	\$ 36.35	30.28
AREA 2.....	\$ 38.35	30.28
GROUP 3		
AREA 1.....	\$ 31.74	30.28
AREA 2.....	\$ 33.74	30.28

## GROUP DESCRIPTIONS:

GROUP 1: Landscape Finish Grade Operator: All finish grade work regardless of equipment used, and all equipment with a rating more than 65 HP.

GROUP 2: Landscape Operator up to 65 HP: All equipment with a manufacturer's rating of 65 HP or less except equipment covered by Group 1 or Group 3. The following equipment shall be included except when used for finish work as long as manufacturer's rating is 65 HP or less: A-Frame and Winch Truck, Backhoe, Forklift, Hydragraphic Seeder Machine, Roller, Rubber-Tired and Track Earthmoving Equipment, Skiploader, Straw Blowers, and Trencher 31 HP up to 65 HP.

GROUP 3: Landscape Utility Operator: Small Rubber-Tired Tractor, Trencher Under 31 HP.

## AREA DESCRIPTIONS:

AREA 1: ALAMEDA, BUTTE, CONTRA COSTA, KINGS, MARIN, MERCED, NAPA, SACRAMENTO, SAN BENITO, SAN FRANCISCO, SAN JOAQUIN, SAN MATEO, SANTA CLARA, SANTA CRUZ, SOLANO, STANISLAUS, SUTTER, YOLO, AND YUBA COUNTIES

AREA 2 - MODOC COUNTY

THE REMAINING COUNTIES ARE SPLIT BETWEEN AREA 1 AND AREA 2 AS NOTED BELOW:



ALPINE COUNTY:

Area 1: Northernmost part

Area 2: Remainder

CALAVERAS COUNTY:

Area 1: Except Eastern part

Area 2: Eastern part

COLUSA COUNTY:

Area 1: Eastern part

Area 2: Remainder

DEL NORTE COUNTY:

Area 1: Extreme Southwestern corner

Area 2: Remainder

ELDORADO COUNTY:

Area 1: North Central part

Area 2: Remainder

FRESNO COUNTY

Area 1: Except Eastern part

Area 2: Eastern part

GLENN COUNTY:

Area 1: Eastern part

Area 2: Remainder

HUMBOLDT COUNTY:

Area 1: Except Eastern and Southwestern parts

Area 2: Remainder

LAKE COUNTY:

Area 1: Southern part

Area 2: Remainder

LASSEN COUNTY:

Area 1: Western part along the Southern portion of border  
with Shasta County

Area 2: Remainder

MADERA COUNTY

Area 1: Remainder

Area 2: Eastern part

MARIPOSA COUNTY

Area 1: Remainder

Area 2: Eastern part

MENDOCINO COUNTY:

Area 1: Central and Southeastern parts

Area 2: Remainder

MONTEREY COUNTY

Area 1: Remainder

Area 2: Southwestern part

NEVADA COUNTY:

Area 1: All but the Northern portion along the border of  
Sierra County

Area 2: Remainder

PLACER COUNTY:

Area 1: All but the Central portion

Area 2: Remainder

PLUMAS COUNTY:

Area 1: Western portion

Area 2: Remainder

SHASTA COUNTY:

Area 1: All but the Northeastern corner

Area 2: Remainder

SIERRA COUNTY:

Area 1: Western part

Area 2: Remainder

SISKIYOU COUNTY:

Area 1: Central part

Area 2: Remainder

SONOMA COUNTY:

Area 1: All but the Northwestern corner

Area 2: Reaminder

TEHAMA COUNTY:

Area 1: All but the Western border with mendocino & Trinity  
Counties

Area 2: Remainder

TRINITY COUNTY:

Area 1: East Central part and the Northeaster border with  
Shasta County

Area 2: Remainder

TULARE COUNTY;

Area 1: Remainder

Area 2: Eastern part

TUOLUMNE COUNTY:

Area 1: Remainder

Area 2: Eastern Part

-----

ENGI0003-038 06/29/2020

""AREA 1"" WAGE RATES ARE LISTED BELOW

""AREA 2"" RECEIVES AN ADDITIONAL \$2.00 PER HOUR ABOVE AREA 1  
RATES.

SEE AREA DEFINITIONS BELOW

	Rates	Fringes
--	-------	---------

OPERATOR: Power Equipment

(AREA 1:)

GROUP 1.....	\$ 51.42	31.15
GROUP 2.....	\$ 49.89	31.15
GROUP 3.....	\$ 48.41	31.15
GROUP 4.....	\$ 47.03	31.15

GROUP 5.....	\$ 45.76	31.15
GROUP 6.....	\$ 44.44	31.15
GROUP 7.....	\$ 43.30	31.15
GROUP 8.....	\$ 42.16	31.15
GROUP 8-A.....	\$ 39.95	31.15

OPERATOR: Power Equipment

(Cranes and Attachments -

AREA 1:)

GROUP 1		
Cranes.....	\$ 52.30	31.15
Oiler.....	\$ 43.79	31.15
Truck crane oiler.....	\$ 46.08	31.15
GROUP 2		
Cranes.....	\$ 50.54	31.15
Oiler.....	\$ 42.83	31.15
Truck crane oiler.....	\$ 45.07	31.15
GROUP 3		
Cranes.....	\$ 48.80	31.15
Hydraulic.....	\$ 44.44	31.15
Oiler.....	\$ 42.55	31.15
Truck crane oiler.....	\$ 44.83	31.15
GROUP 4		
Cranes.....	\$ 45.76	31.15

OPERATOR: Power Equipment

(Piledriving - AREA 1:)

GROUP 1		
Lifting devices.....	\$ 52.64	31.15
Oiler.....	\$ 43.38	31.15
Truck Crane Oiler.....	\$ 45.66	31.15
GROUP 2		
Lifting devices.....	\$ 50.82	31.15

Oiler.....\$ 43.11	31.15
Truck Crane Oiler.....\$ 45.41	31.15

GROUP 3

Lifting devices.....\$ 49.14	31.15
Oiler.....\$ 42.89	31.15
Truck Crane Oiler.....\$ 45.12	31.15

GROUP 4

Lifting devices.....\$ 47.37	31.15
------------------------------	-------

GROUP 5

Lifting devices.....\$ 44.73	31.15
------------------------------	-------

GROUP 6

Lifting devices.....\$ 42.50	31.15
------------------------------	-------

OPERATOR: Power Equipment

(Steel Erection - AREA 1:)

GROUP 1

Cranes.....\$ 53.27	31.15
Oiler.....\$ 43.72	31.15
Truck Crane Oiler.....\$ 45.95	31.15

GROUP 2

Cranes.....\$ 51.50	31.15
Oiler.....\$ 43.45	31.15
Truck Crane Oiler.....\$ 45.73	31.15

GROUP 3

Cranes.....\$ 50.02	31.15
Hydraulic.....\$ 45.07	31.15
Oiler.....\$ 43.23	31.15
Truck Crane Oiler.....\$ 45.46	31.15

GROUP 4

Cranes.....\$ 48.00	31.15
---------------------	-------

GROUP 5

Cranes.....\$ 46.70	31.15
---------------------	-------

OPERATOR: Power Equipment  
(Tunnel and Underground Work  
- AREA 1:)

SHAFTS, STOPES, RAISES:

GROUP 1.....	\$ 47.52	31.15
GROUP 1-A.....	\$ 49.99	31.15
GROUP 2.....	\$ 46.26	31.15
GROUP 3.....	\$ 44.93	31.15
GROUP 4.....	\$ 43.79	31.15
GROUP 5.....	\$ 42.65	31.15

UNDERGROUND:

GROUP 1.....	\$ 47.42	31.15
GROUP 1-A.....	\$ 49.89	31.15
GROUP 2.....	\$ 46.16	31.15
GROUP 3.....	\$ 44.83	31.15
GROUP 4.....	\$ 43.69	31.15
GROUP 5.....	\$ 42.55	31.15

FOOTNOTE: Work suspended by ropes or cables, or work on a  
Yo-Yo Cat: \$.60 per hour additional.

POWER EQUIPMENT OPERATOR CLASSIFICATIONS

GROUP 1: Operator of helicopter (when used in erection work);  
Hydraulic excavator, 7 cu. yds. and over; Power shovels,  
over 7 cu. yds.

GROUP 2: Highline cableway; Hydraulic excavator, 3-1/2 cu.  
yds. up to 7 cu. yds.; Licensed construction work boat  
operator, on site; Power blade operator (finish); Power

shovels, over 1 cu. yd. up to and including 7 cu. yds.

m.r.c.

GROUP 3: Asphalt milling machine; Cable backhoe; Combination backhoe and loader over 3/4 cu. yds.; Continuous flight tie back machine assistant to engineer or mechanic; Crane mounted continuous flight tie back machine, tonnage to apply; Crane mounted drill attachment, tonnage to apply; Dozer, slope brd; Gradall; Hydraulic excavator, up to 3 1/2 cu. yds.; Loader 4 cu. yds. and over; Long reach excavator; Multiple engine scraper (when used as push pull); Power shovels, up to and including 1 cu. yd.; Pre-stress wire wrapping machine; Side boom cat, 572 or larger; Track loader 4 cu. yds. and over; Wheel excavator (up to and including 750 cu. yds. per hour)

GROUP 4: Asphalt plant engineer/box person; Chicago boom; Combination backhoe and loader up to and including 3/4 cu. yd.; Concrete batch plant (wet or dry); Dozer and/or push cat; Pull- type elevating loader; Gradesetter, grade checker (GPS, mechanical or otherwise); Grooving and grinding machine; Heading shield operator; Heavy-duty drilling equipment, Hughes, LDH, Watson 3000 or similar; Heavy-duty repairperson and/or welder; Lime spreader; Loader under 4 cu. yds.; Lubrication and service engineer (mobile and grease rack); Mechanical finishers or spreader machine (asphalt, Barber-Greene and similar); Miller Formless M-9000 slope paver or similar; Portable crushing and screening plants; Power blade support; Roller operator, asphalt; Rubber-tired scraper, self-loading (paddle-wheels, etc.); Rubber- tired earthmoving equipment (scrapers); Slip



form paver (concrete); Small tractor with drag; Soil stabilizer (P & H or equal); Spider plow and spider puller; Tubex pile rig; Unlicensed construction work boat operator, on site; Timber skidder; Track loader up to 4 yds.; Tractor-drawn scraper; Tractor, compressor drill combination; Welder; Woods-Mixer (and other similar Pugmill equipment)

GROUP 5: Cast-in-place pipe laying machine; Combination slusher and motor operator; Concrete conveyor or concrete pump, truck or equipment mounted; Concrete conveyor, building site; Concrete pump or pumpcrete gun; Drilling equipment, Watson 2000, Texoma 700 or similar; Drilling and boring machinery, horizontal (not to apply to waterliners, wagon drills or jackhammers); Concrete mixer/all; Person and/or material hoist; Mechanical finishers (concrete) (Clary, Johnson, Bidwell Bridge Deck or similar types); Mechanical burm, curb and/or curb and gutter machine, concrete or asphalt); Mine or shaft hoist; Portable crusher; Power jumbo operator (setting slip-forms, etc., in tunnels); Screed (automatic or manual); Self-propelled compactor with dozer; Tractor with boom D6 or smaller; Trenching machine, maximum digging capacity over 5 ft. depth; Vermeer T-600B rock cutter or similar

GROUP 6: Armor-Coater (or similar); Ballast jack tamper; Boom- type backfilling machine; Assistant plant engineer; Bridge and/or gantry crane; Chemical grouting machine, truck-mounted; Chip spreading machine operator; Concrete saw (self-propelled unit on streets, highways, airports and canals); Deck engineer; Drilling equipment Texoma 600,

Hughes 200 Series or similar up to and including 30 ft. m.r.c.; Drill doctor; Helicopter radio operator; Hydro-hammer or similar; Line master; Skidsteer loader, Bobcat larger than 743 series or similar (with attachments); Locomotive; Lull hi-lift or similar; Oiler, truck mounted equipment; Pavement breaker, truck-mounted, with compressor combination; Paving fabric installation and/or laying machine; Pipe bending machine (pipelines only); Pipe wrapping machine (tractor propelled and supported); Screed (except asphaltic concrete paving); Self-propelled pipeline wrapping machine; Tractor; Self-loading chipper; Concrete barrier moving machine

GROUP 7: Ballast regulator; Boom truck or dual-purpose A-frame truck, non-rotating - under 15 tons; Cargolift or similar; Combination slurry mixer and/or cleaner; Drilling equipment, 20 ft. and under m.r.c.; Firetender (hot plant); Grouting machine operator; Highline cableway signaller; Stationary belt loader (Kolman or similar); Lift slab machine (Vagtborg and similar types); Maginnes internal full slab vibrator; Material hoist (1 drum); Mechanical trench shield; Pavement breaker with or without compressor combination); Pipe cleaning machine (tractor propelled and supported); Post driver; Roller (except asphalt); Chip Seal; Self-propelled automatically applied concrete curing machine (on streets, highways, airports and canals); Self-propelled compactor (without dozer); Signaller; Slip-form pumps (lifting device for concrete forms); Tie spacer; Tower mobile; Trenching machine, maximum digging capacity up to and including 5 ft. depth; Truck-type loader

GROUP 8: Bit sharpener; Boiler tender; Box operator; Brakeperson; Combination mixer and compressor (shotcrete/gunite); Compressor operator; Deckhand; Fire tender; Forklift (under 20 ft.); Generator; Gunite/shotcrete equipment operator; Hydraulic monitor; Ken seal machine (or similar); Mixermobile; Oiler; Pump operator; Refrigeration plant; Reservoir-debris tug (self-propelled floating); Ross Carrier (construction site); Rotomist operator; Self-propelled tape machine; Shuttlecar; Self-propelled power sweeper operator (includes vacuum sweeper); Slusher operator; Surface heater; Switchperson; Tar pot firetender; Tugger hoist, single drum; Vacuum cooling plant; Welding machine (powered other than by electricity)

GROUP 8-A: Elevator operator; Skidsteer loader-Bobcat 743 series or smaller, and similar (without attachments); Mini excavator under 25 H.P. (backhoe-trencher); Tub grinder wood chipper

---

#### ALL CRANES AND ATTACHMENTS

GROUP 1: Clamshell and dragline over 7 cu. yds.; Crane, over 100 tons; Derrick, over 100 tons; Derrick barge pedestal-mounted, over 100 tons; Self-propelled boom-type lifting device, over 100 tons

GROUP 2: Clamshell and dragline over 1 cu. yd. up to and including 7 cu. yds.; Crane, over 45 tons up to and

including 100 tons; Derrick barge, 100 tons and under;  
Self-propelled boom-type lifting device, over 45 tons;  
Tower crane

GROUP 3: Clamshell and dragline up to and including 1 cu.  
yd.; Cranes 45 tons and under; Self-propelled boom-type  
lifting device 45 tons and under;

GROUP 4: Boom Truck or dual purpose A-frame truck,  
non-rotating over 15 tons; Truck-mounted rotating  
telescopic boom type lifting device, Manitex or similar  
(boom truck) over 15 tons; Truck-mounted rotating  
telescopic boom type lifting device, Manitex or similar  
(boom truck) - under 15 tons;

-----

#### PILEDRIVERS

GROUP 1: Derrick barge pedestal mounted over 100 tons;  
Clamshell over 7 cu. yds.; Self-propelled boom-type lifting  
device over 100 tons; Truck crane or crawler, land or barge  
mounted over 100 tons

GROUP 2: Derrick barge pedestal mounted 45 tons to and  
including 100 tons; Clamshell up to and including 7 cu.  
yds.; Self-propelled boom-type lifting device over 45 tons;  
Truck crane or crawler, land or barge mounted, over 45 tons  
up to and including 100 tons; Fundex F-12 hydraulic pile rig

GROUP 3: Derrick barge pedestal mounted under 45 tons; Self-

propelled boom-type lifting device 45 tons and under;  
Skid/scow piledriver, any tonnage; Truck crane or crawler,  
land or barge mounted 45 tons and under

GROUP 4: Assistant operator in lieu of assistant to engineer;  
Forklift, 10 tons and over; Heavy-duty repairperson/welder

GROUP 5: Deck engineer

GROUP 6: Deckhand; Fire tender

-----

#### STEEL ERECTORS

GROUP 1: Crane over 100 tons; Derrick over 100 tons; Self-  
propelled boom-type lifting device over 100 tons

GROUP 2: Crane over 45 tons to 100 tons; Derrick under 100  
tons; Self-propelled boom-type lifting device over 45 tons  
to 100 tons; Tower crane

GROUP 3: Crane, 45 tons and under; Self-propelled boom-type  
lifting device, 45 tons and under

GROUP 4: Chicago boom; Forklift, 10 tons and over; Heavy-duty  
repair person/welder

GROUP 5: Boom cat

-----

--

## TUNNEL AND UNDERGROUND WORK

GROUP 1-A: Tunnel bore machine operator, 20' diameter or more

GROUP 1: Heading shield operator; Heavy-duty repairperson;  
Mucking machine (rubber tired, rail or track type); Raised  
bore operator (tunnels); Tunnel mole bore operator

GROUP 2: Combination slusher and motor operator; Concrete  
pump or pumpcrete gun; Power jumbo operator

GROUP 3: Drill doctor; Mine or shaft hoist

GROUP 4: Combination slurry mixer cleaner; Grouting Machine  
operator; Motorman

GROUP 5: Bit Sharpener; Brakeman; Combination mixer and  
compressor (gunite); Compressor operator; Oiler; Pump  
operator; Slusher operator

-----

## AREA DESCRIPTIONS:

POWER EQUIPMENT OPERATORS, CRANES AND ATTACHMENTS, TUNNEL AND  
UNDERGROUND [These areas do not apply to Piledrivers and  
Steel Erectors]

AREA 1: DEL NORTE, HUMBOLDT, LAKE, MENDOCINO

AREA 2 -NOTED BELOW

THE REMAINING COUNTIES ARE SPLIT BETWEEN AREA 1 AND AREA 2 AS  
NOTED BELOW:

DEL NORTE COUNTY:

Area 1: Extreme Southwest corner

Area 2: Remainder

HUMBOLDT COUNTY:

Area 1: Except Eastern and Southwestern parts

Area 2: Remainder

LAKE COUNTY:

Area 1: Southern part

Area 2: Remainder

MENDOCINO COUNTY:

Area 1: Central and Southeastern Parts

Area 2: Remainder

-----  
IRON0433-006 07/01/2020

	Rates	Fringes
IRONWORKER		
Fence Erector.....	\$ 34.58	24.81
Ornamental, Reinforcing		
and Structural.....	\$ 41.00	33.45

PREMIUM PAY:

\$6.00 additional per hour at the following locations:

China Lake Naval Test Station, Chocolate Mountains Naval Reserve-Niland, Edwards AFB, Fort Irwin Military Station, Fort Irwin Training Center-Goldstone, San Clemente Island, San Nicholas Island, Susanville Federal Prison, 29 Palms - Marine Corps, U.S. Marine Base - Barstow, U.S. Naval Air Facility - Seale, Vandenberg AFB

\$4.00 additional per hour at the following locations:

Army Defense Language Institute - Monterey, Fallon Air Base, Naval Post Graduate School - Monterey, Yermo Marine Corps Logistics Center

\$2.00 additional per hour at the following locations:

Port Hueneme, Port Mugu, U.S. Coast Guard Station - Two Rock

-----

LABO0067-001 06/29/2020

AREA "A" - MARIN COUNTY

AREA "B" - ALPINE, AMADOR, BUTTE COLUSA EL DORADO, GLENN, LASSEN, MODOC, NAPA, NEVADA, PLACER, PLUMAS, SACRAMENTO, SHASTA, SIERRA, SISKIYOU, SOLANO, SONOMA, SUTTER, TEHAMA, TRINITY, YOLO, AND YUBA COUNTIES



	Rates	Fringes
Asbestos Removal Laborer.....	\$ 25.05	12.00
LABORER (Lead Removal)		
Marin County.....	\$ 33.07	25.30
Remaining Counties.....	\$ 32.07	25.30

-----  
LABO0067-005 06/27/2017

AREA ""A"" - ALAMEDA, CONTRA COSTA, MARIN, SAN FRANCISCO, SAN MATEO AND SANTA CLARA COUNTIES

AREA ""B"" - ALPINE, AMADOR, BUTTE, CALAVERAS, COLUSA, DEL NORTE, EL DORADO, FRESNO, GLENN, HUMBOLDT, KINGS, LAKE, LASSEN, MADERA, MARIPOSA, MENDOCINO, MERCED, MODOC, MONTEREY, NAPA, NEVADA, PLACER, PLUMAS, SANCREMENTO, SAN BENITO, SAN JOAQUIN, SANTA CRUZ, SIERRA, SHASTA, SISKIYOU, SOLANO, SONOMA, STANISLAUS, TEHAMA, TRINITY, TULARE, TUOLUMNE, YOLO AND YUBA COUNTIES

	Rates	Fringes
LABORER (TRAFFIC CONTROL/LANE CLOSURE)		
Escort Driver, Flag Person		
Area A.....	\$ 29.54	22.17
Area B.....	\$ 28.54	22.17
Traffic Control Person I		

Area A.....	\$ 29.84	22.17
Area B.....	\$ 28.84	22.17
Traffic Control Person II		
Area A.....	\$ 27.34	22.17
Area B.....	\$ 26.34	22.17

TRAFFIC CONTROL PERSON I: Layout of traffic control, crash cushions, construction area and roadside signage.

TRAFFIC CONTROL PERSON II: Installation and removal of temporary/permanent signs, markers, delineators and crash cushions.

-----

LABO0185-002 07/01/2020

ALPINE, AMADOR, BUTTE, COLUSA, EL DORADO, GLENN, LASSEN, MODOC, NEVADA, PLACER, PLUMAS, SACRAMENTO, SHASTA, SIERRA, SISKIYOU, SUTTER, TEHAMA, TRINITY, YOLO AND YUBA COUNTIES

Rates                      Fringes

LABORER

Mason Tender-Brick.....	\$ 32.84	23.71
-------------------------	----------	-------

-----

LABO0185-005 06/25/2018

ALPINE, AMADOR, BUTTE, COLUSA, EL DORADO, GLENN, LASSEN, MODOC, NEVADA, PLACER, PLUMAS, SACRAMENTO, SHASTA, SIERRA, SISKIYOU, SUTTER, TEHAMA, TRINITY, YOLO AND YUBA COUNTIES

	Rates	Fringes
--	-------	---------

Tunnel and Shaft Laborers:

GROUP 1.....	\$ 37.82	24.11
GROUP 2.....	\$ 37.59	24.11
GROUP 3.....	\$ 37.34	24.11
GROUP 4.....	\$ 36.89	24.11
GROUP 5.....	\$ 36.35	24.11
Shotcrete Specialist.....	\$ 38.34	24.11

## TUNNEL AND SHAFT CLASSIFICATIONS

GROUP 1: Diamond driller; Groundmen; Gunite and shotcrete nozzlemen

GROUP 2: Rodmen; Shaft work & raise (below actual or excavated ground level)

GROUP 3: Bit grinder; Blaster, driller, powdermen, heading; Cherry pickermen - where car is lifted; Concrete finisher in tunnel; Concrete screedman; Grout pumpman and potman; Gunite & shotcrete gunman & potman; Headermen; High pressure nozzleman; Miner - tunnel, including top and bottom man on shaft and raise work; Nipper; Nozzleman on slick line; Sandblaster - potman, Robotic Shotcrete Placer, Segment Erector, Tunnel Muck Hauler, Steel Form raiser and setter; Timberman, retimberman (wood or steel or substitute materials therefore); Tugger (for tunnel laborer work); Cable tender; Chuck tender; Powderman - primer house

GROUP 4: Vibrator operator, pavement breaker; Bull gang - muckers, trackmen; Concrete crew - includes rodding and spreading, Dumpmen (any method)

GROUP 5: Grout crew; Reboundman; Swamper/ Brakeman

-----

LABO0185-006 06/25/2018

ALPINE, AMADOR, BUTTE, COLUSA, EL DORADO, GLENN, LASSEN, MODOC, NEVADA, PLACER, PLUMAS, SACRAMENTO, SHIESTA, SIERRA, SISKIYOU, SUTTER, TEHAMA, TRINITY, YOLO, YUBA COUNTIES

Rates                      Fringes

LABORER (CONSTRUCTION CRAFT

LABORERS - AREA B:)

Construction Specialist

Group.....	\$ 30.49	23.20
GROUP 1.....	\$ 29.79	23.20
GROUP 1-a.....	\$ 30.01	23.20
GROUP 1-c.....	\$ 30.01	23.20
GROUP 1-e.....	\$ 30.34	23.20
GROUP 1-f.....	\$ 30.37	23.20
GROUP 2.....	\$ 29.64	23.20
GROUP 3.....	\$ 29.54	23.20
GROUP 4.....	\$ 23.23	23.20

See groups 1-b and 1-d under laborer classifications.

LABORER (GARDENERS,

## HORTICULTURAL & LANDSCAPE

### LABORERS - AREA B:)

(1) New Construction.....\$ 29.54	23.20
-----------------------------------	-------

(2) Establishment Warranty	
----------------------------	--

Period.....\$ 23.23	23.20
---------------------	-------

### LABORER (GUNITE - AREA B:)

GROUP 1.....\$ 29.75	22.31
----------------------	-------

GROUP 2.....\$ 29.25	22.31
----------------------	-------

GROUP 3.....\$ 28.66	22.31
----------------------	-------

GROUP 4.....\$ 28.54	22.31
----------------------	-------

### LABORER (WRECKING - AREA B:)

GROUP 1.....\$ 29.79	23.20
----------------------	-------

GROUP 2.....\$ 29.64	23.20
----------------------	-------

## FOOTNOTES:

Laborers working off or with or from bos'n chairs, swinging scaffolds, belts shall receive \$0.25 per hour above the applicable wage rate. This shall not apply to workers entitled to receive the wage rate set forth in Group 1-a below.

-----

## LABORER CLASSIFICATIONS

CONSTRUCTION SPECIALIST GROUP: Asphalt ironer and raker;  
Chainsaw; Laser beam in connection with laborers' work;  
Cast-in- place manhole form setter; Pressure pipelayer;  
Davis trencher - 300 or similar type (and all small  
trenchers); Blaster; Diamond driller; Multiple unit drill;

## Hydraulic drill

GROUP 1: Asphalt spreader boxes (all types); Barko, Wacker and similar type tampers; Buggymobile; Caulker, bander, pipewrapper, conduit layer, plastic pipelayer; Certified hazardous waste worker including Leade Abatement; Compactors of all types; Concrete and magnesite mixer, 1/2 yd. and under; Concrete pan work; Concrete sander; Concrete saw; Cribber and/or shoring; Cut granite curb setter; Dri-pak-it machine; Faller, logloader and buckler; Form raiser, slip forms; Green cutter; Headerboard, Hubsetter, aligner, by any method; High pressure blow pipe (1-1/2" or over, 100 lbs. pressure/over); Hydro seeder and similar type; Jackhammer operator; Jacking of pipe over 12 inches; Jackson and similar type compactor; Kettle tender, pot and worker applying asphalt, lay-kold, creosote, lime, caustic and similar type materials (applying means applying, dipping or handling of such materials); Lagging, sheeting, whaling, bracing, trenchjacking, lagging hammer; Magnesite, epoxyresin, fiberglass, mastic worker (wet or dry); No joint pipe and stripping of same, including repair of voids; Pavement breaker and spader, including tool grinder; Perma curb; Pipelayer (including grade checking in connection with pipelaying); Precast-manhole setter; Pressure pipe tester; Post hole digger, air, gas and electric; Power broom sweeper; Power tampers of all types (except as shown in Group 2); Ram set gun and stud gun; Riprap stonepaver and rock-slinger, including placing of sacked concrete and/or sand (wet or dry) and gabions and similar type; Rotary scarifier or multiple head concrete chipping scarifier; Roto and Ditch Witch; Rototiller;

Sandblaster, pot, gun, nozzle operators; Signalling and rigging; Tank cleaner; Tree climber; Turbo blaster; Vibrascreed, bull float in connection with laborers' work; Vibrator; Hazardous waste worker (lead removal); Asbestos and mold removal worker

GROUP 1-a: Joy drill model TWM-2A; Gardner-Denver model DH143 and similar type drills; Track driller; Jack leg driller; Wagon driller; Mechanical drillers, all types regardless of type or method of power; Mechanical pipe layers, all types regardless of type or method of power; Blaster and powder; All work of loading, placing and blasting of all powder and explosives of whatever type regardless of method used for such loading and placing; High scalers (including drilling of same); Tree topper; Bit grinder

GROUP 1-b: Sewer cleaners shall receive \$4.00 per day above Group 1 wage rates. ""Sewer cleaner"" means any worker who handles or comes in contact with raw sewage in small diameter sewers. Those who work inside recently active, large diameter sewers, and all recently active sewer manholes shall receive \$5.00 per day above Group 1 wage rates.

GROUP 1-c: Burning and welding in connection with laborers' work; Synthetic thermoplastics and similar type welding

GROUP 1-d: Maintenance and repair track and road beds. All employees performing work covered herein shall receive \$ .25 per hour above their regular rate for all work performed on underground structures not specifically

covered herein. This paragraph shall not be construed to apply to work below ground level in open cut. It shall apply to cut and cover work of subway construction after the temporary cover has been placed.

GROUP 1-e: Work on and/or in bell hole footings and shafts thereof, and work on and in deep footings. (A deep footing is a hole 15 feet or more in depth.) In the event the depth of the footing is unknown at the commencement of excavation, and the final depth exceeds 15 feet, the deep footing wage rate would apply to all employees for each and every day worked on or in the excavation of the footing from the date of inception.

GROUP 1-f: Wire winding machine in connection with guniting or shot crete

GROUP 2: Asphalt shoveler; Cement dumper and handling dry cement or gypsum; Choke-setter and rigger (clearing work); Concrete bucket dumper and chute; Concrete chipping and grinding; Concrete laborer (wet or dry); Driller tender, chuck tender, nipper; Guinea chaser (stake), grout crew; High pressure nozzle, adductor; Hydraulic monitor (over 100 lbs. pressure); Loading and unloading, carrying and hauling of all rods and materials for use in reinforcing concrete construction; Pittsburgh chipper and similar type brush shredders; Sloper; Single foot, hand-held, pneumatic tamper; All pneumatic, air, gas and electric tools not listed in Groups 1 through 1-f; Jacking of pipe - under 12 inches



GROUP 3: Construction laborers, including bridge and general laborer; Dump, load spotter; Flag person; Fire watcher; Fence erector; Guardrail erector; Gardener, horticultural and landscape laborer; Jetting; Limber, brush loader and piler; Pavement marker (button setter); Maintenance, repair track and road beds; Streetcar and railroad construction track laborer; Temporary air and water lines, Victaulic or similar; Tool room attendant (jobsite only)

GROUP 4: Final clean-up work of debris, grounds and building including but not limited to: street cleaner; cleaning and washing windows; brick cleaner (jobsite only); material cleaner (jobsite only). The classification ""material cleaner"" is to be utilized under the following conditions:

A: at demolition site for the salvage of the material.

B: at the conclusion of a job where the material is to be salvaged and stocked to be reused on another job.

C: for the cleaning of salvage material at the jobsite or temporary jobsite yard.

The material cleaner classification should not be used in the performance of ""form stripping, cleaning and oiling and moving to the next point of erection"".

-----

## GUNITE LABORER CLASSIFICATIONS

GROUP 1: Structural Nozzleman

GROUP 2: Nozzleman, Gunman, Potman, Groundman

GROUP 3: Reboundman

GROUP 4: Guniting laborer

-----

#### WRECKING WORK LABORER CLASSIFICATIONS

GROUP 1: Skilled wrecker (removing and salvaging of sash,  
windows and materials)

GROUP 2: Semi-skilled wrecker (salvaging of other building  
materials)

-----

LABO0185-008 07/01/2018

	Rates	Fringes
Plasterer tender.....	\$ 32.02	23.00

Work on a swing stage scaffold: \$1.00 per hour additional.

-----

LABO0261-002 06/25/2018

MARIN COUNTY

	Rates	Fringes
--	-------	---------

LABORER (TRAFFIC CONTROL/LANE

CLOSURE)

Escort Driver, Flag Person..\$ 30.54	23.65
Traffic Control Person I....\$ 30.84	23.65
Traffic Control Person II...\$ 28.34	23.65

TRAFFIC CONTROL PERSON I: Layout of traffic control, crash cushions, construction area and roadside signage.

TRAFFIC CONTROL PERSON II: Installation and removal of temporary/permanent signs, markers, delineators and crash cushions.

-----  
LABO0261-004 06/25/2018

MARIN COUNTY

Rates	Fringes
-------	---------

Tunnel and Shaft Laborers:

GROUP 1.....\$ 37.82	24.11
GROUP 2.....\$ 37.59	24.11
GROUP 3.....\$ 37.34	24.11
GROUP 4.....\$ 36.89	24.11
GROUP 5.....\$ 36.35	24.11
Shotcrete Specialist.....\$ 38.34	24.11

TUNNEL AND SHAFT CLASSIFICATIONS

GROUP 1: Diamond driller; Groundmen; Gunite and shotcrete nozzlemen

GROUP 2: Rodmen; Shaft work & raise (below actual or excavated ground level)

GROUP 3: Bit grinder; Blaster, driller, powdermen, heading; Cherry pickermen - where car is lifted; Concrete finisher in tunnel; Concrete screedman; Grout pumpman and potman; Gunite & shotcrete gunman & potman; Headermen; High pressure nozzleman; Miner - tunnel, including top and bottom man on shaft and raise work; Nipper; Nozzleman on slick line; Sandblaster - potman, Robotic Shotcrete Placer, Segment Erector, Tunnel Muck Hauler, Steel Form raiser and setter; Timberman, retimberman (wood or steel or substitute materials therefore); Tugger (for tunnel laborer work); Cable tender; Chuck tender; Powderman - primer house

GROUP 4: Vibrator operator, pavement breaker; Bull gang - muckers, trackmen; Concrete crew - includes rodding and spreading, Dumpmen (any method)

GROUP 5: Grout crew; Reboundman; Swamper/ Brakeman

-----

LABO0261-007 07/01/2018

MARIN AND NAPA COUNTIES

	Rates	Fringes
--	-------	---------

LABORER

Mason Tender-Brick.....	\$ 32.45	22.20
-------------------------	----------	-------

-----  
LABO0261-010 06/25/2018

MARIN COUNTY

Rates            Fringes

LABORER (CONSTRUCTION CRAFT

LABORERS - AREA A:)

Construction Specialist

Group.....	\$ 31.49	23.20
GROUP 1.....	\$ 30.79	23.20
GROUP 1-a.....	\$ 31.01	23.20
GROUP 1-c.....	\$ 30.84	23.20
GROUP 1-e.....	\$ 31.34	23.20
GROUP 1-f.....	\$ 31.37	23.20
GROUP 2.....	\$ 30.64	23.20
GROUP 3.....	\$ 30.54	23.20
GROUP 4.....	\$ 24.23	23.20

See groups 1-b and 1-d under laborer classifications.

LABORER (GARDENERS,

HORTICULTURAL & LANDSCAPE

LABORERS - AREA A:)

(1) New Construction.....	\$ 30.54	23.20
(2) Establishment Warranty		
Period.....	\$ 24.23	23.20

LABORER (GUNITE - AREA A:)

GROUP 1.....	\$ 30.75	22.31
GROUP 2.....	\$ 30.25	22.31
GROUP 3.....	\$ 29.66	22.31
GROUP 4.....	\$ 29.54	22.31

LABORER (WRECKING - AREA A:)

GROUP 1.....	\$ 30.79	23.20
GROUP 2.....	\$ 30.64	23.20

FOOTNOTES:

Laborers working off or with or from bos'n chairs, swinging scaffolds, belts shall receive \$0.25 per hour above the applicable wage rate. This shall not apply to workers entitled to receive the wage rate set forth in Group 1-a below.

-----

LABORER CLASSIFICATIONS

CONSTRUCTION SPECIALIST GROUP: Asphalt ironer and raker; Chainsaw; Laser beam in connection with laborers' work; Cast-in- place manhole form setter; Pressure pipelayer; Davis trencher - 300 or similar type (and all small trenchers); Blaster; Diamond driller; Multiple unit drill; Hydraulic drill

GROUP 1: Asphalt spreader boxes (all types); Barko, Wacker and similar type tampers; Buggymobile; Caulker, bander, pipewrapper, conduit layer, plastic pipelayer; Certified hazardous waste worker including Leade Abatement; Compactors of all types; Concrete and magnesite mixer, 1/2 yd. and under; Concrete pan work; Concrete sander; Concrete saw; Cribber and/or shoring; Cut granite curb setter; Dri-pak-it machine; Faller, logloader and buckler; Form

raiser, slip forms; Green cutter; Headerboard, Hubsetter, aligner, by any method; High pressure blow pipe (1-1/2" or over, 100 lbs. pressure/over); Hydro seeder and similar type; Jackhammer operator; Jacking of pipe over 12 inches; Jackson and similar type compactor; Kettle tender, pot and worker applying asphalt, lay-kold, creosote, lime, caustic and similar type materials (applying means applying, dipping or handling of such materials); Lagging, sheeting, whaling, bracing, trenchjacking, lagging hammer; Magnesite, epoxyresin, fiberglass, mastic worker (wet or dry); No joint pipe and stripping of same, including repair of voids; Pavement breaker and spader, including tool grinder; Perma curb; Pipelayer (including grade checking in connection with pipelaying); Precast-manhole setter; Pressure pipe tester; Post hole digger, air, gas and electric; Power broom sweeper; Power tampers of all types (except as shown in Group 2); Ram set gun and stud gun; Riprap stonepaver and rock-slinger, including placing of sacked concrete and/or sand (wet or dry) and gabions and similar type; Rotary scarifier or multiple head concrete chipping scarifier; Roto and Ditch Witch; Rototiller; Sandblaster, pot, gun, nozzle operators; Signalling and rigging; Tank cleaner; Tree climber; Turbo blaster; Vibrascreed, bull float in connection with laborers' work; Vibrator; Hazardous waste worker (lead removal); Asbestos and mold removal worker

GROUP 1-a: Joy drill model TWM-2A; Gardner-Denver model DH143 and similar type drills; Track driller; Jack leg driller; Wagon driller; Mechanical drillers, all types regardless of type or method of power; Mechanical pipe layers, all types

regardless of type or method of power; Blaster and powder;  
All work of loading, placing and blasting of all powder and  
explosives of whatever type regardless of method used for  
such loading and placing; High scalers (including drilling  
of same); Tree topper; Bit grinder

GROUP 1-b: Sewer cleaners shall receive \$4.00 per day above  
Group 1 wage rates. ""Sewer cleaner"" means any worker who  
handles or comes in contact with raw sewage in small  
diameter sewers. Those who work inside recently active,  
large diameter sewers, and all recently active sewer  
manholes shall receive \$5.00 per day above Group 1 wage  
rates.

GROUP 1-c: Burning and welding in connection with laborers'  
work; Synthetic thermoplastics and similar type welding

GROUP 1-d: Maintenance and repair track and road beds. All  
employees performing work covered herein shall receive \$  
.25 per hour above their regular rate for all work  
performed on underground structures not specifically  
covered herein. This paragraph shall not be construed to  
apply to work below ground level in open cut. It shall  
apply to cut and cover work of subway construction after  
the temporary cover has been placed.

GROUP 1-e: Work on and/or in bell hole footings and shafts  
thereof, and work on and in deep footings. (A deep footing  
is a hole 15 feet or more in depth.) In the event the  
depth of the footing is unknown at the commencement of  
excavation, and the final depth exceeds 15 feet, the deep



footing wage rate would apply to all employees for each and every day worked on or in the excavation of the footing from the date of inception.

GROUP 1-f: Wire winding machine in connection with guniting or shot crete

GROUP 2: Asphalt shoveler; Cement dumper and handling dry cement or gypsum; Choke-setter and rigger (clearing work); Concrete bucket dumper and chute; Concrete chipping and grinding; Concrete laborer (wet or dry); Driller tender, chuck tender, nipper; Guinea chaser (stake), grout crew; High pressure nozzle, adductor; Hydraulic monitor (over 100 lbs. pressure); Loading and unloading, carrying and hauling of all rods and materials for use in reinforcing concrete construction; Pittsburgh chipper and similar type brush shredders; Sloper; Single foot, hand-held, pneumatic tamper; All pneumatic, air, gas and electric tools not listed in Groups 1 through 1-f; Jacking of pipe - under 12 inches

GROUP 3: Construction laborers, including bridge and general laborer; Dump, load spotter; Flag person; Fire watcher; Fence erector; Guardrail erector; Gardener, horticultural and landscape laborer; Jetting; Limber, brush loader and piler; Pavement marker (button setter); Maintenance, repair track and road beds; Streetcar and railroad construction track laborer; Temporary air and water lines, Victaulic or similar; Tool room attendant (jobsite only)

GROUP 4: Final clean-up work of debris, grounds and building

including but not limited to: street cleaner; cleaning and washing windows; brick cleaner (jobsite only); material cleaner (jobsite only). The classification ""material cleaner"" is to be utilized under the following conditions:

A: at demolition site for the salvage of the material.

B: at the conclusion of a job where the material is to be salvaged and stocked to be reused on another job.

C: for the cleaning of salvage material at the jobsite or temporary jobsite yard.

The material cleaner classification should not be used in the performance of ""form stripping, cleaning and oiling and moving to the next point of erection"".

-----

#### GUNITE LABORER CLASSIFICATIONS

GROUP 1: Structural Nozzleman

GROUP 2: Nozzleman, Gunman, Potman, Groundman

GROUP 3: Reboundman

GROUP 4: Guniting laborer

-----

#### WRECKING WORK LABORER CLASSIFICATIONS

GROUP 1: Skilled wrecker (removing and salvaging of sash,

windows and materials)

GROUP 2: Semi-skilled wrecker (salvaging of other building materials)

-----

LABO0261-015 07/01/2018

	Rates	Fringes
Plasterer tender.....	\$ 32.02	23.00

Work on a swing stage scaffold: \$1.00 per hour additional.

-----

LABO0324-004 06/25/2018

NAPA, SOLANO, AND SONOMA, COUNTIES

	Rates	Fringes
LABORER (TRAFFIC CONTROL/LANE CLOSURE)		
Escort Driver, Flag Person..	\$ 29.54	23.65
Traffic Control Person I....	\$ 29.84	23.65
Traffic Control Person II...	\$ 27.34	23.65

TRAFFIC CONTROL PERSON I: Layout of traffic control, crash cushions, construction area and roadside signage.

TRAFFIC CONTROL PERSON II: Installation and removal of temporary/permanent signs, markers, delineators and crash

cushions.

-----  
LABO0324-008 06/25/2018

NAPA, SOLANO, AND SONOMA COUNTIES

	Rates	Fringes
Tunnel and Shaft Laborers:		
GROUP 1.....	\$ 37.82	24.11
GROUP 2.....	\$ 37.59	24.11
GROUP 3.....	\$ 37.34	24.11
GROUP 4.....	\$ 36.89	24.11
GROUP 5.....	\$ 36.35	24.11
Shotcrete Specialist.....	\$ 38.34	24.11

TUNNEL AND SHAFT CLASSIFICATIONS

GROUP 1: Diamond driller; Groundmen; Gunite and shotcrete  
nozzlemen

GROUP 2: Rodmen; Shaft work & raise (below actual or  
excavated ground level)

GROUP 3: Bit grinder; Blaster, driller, powdermen, heading;  
Cherry pickermen - where car is lifted; Concrete finisher  
in tunnel; Concrete screedman; Grout pumpman and potman;  
Gunite & shotcrete gunman & potman; Headermen; High  
pressure nozzleman; Miner - tunnel, including top and  
bottom man on shaft and raise work; Nipper; Nozzleman on

slick line; Sandblaster - potman, Robotic Shotcrete Placer,  
Segment Erector, Tunnel Muck Hauler, Steel Form raiser and  
setter; Timberman, retimberman (wood or steel or substitute  
materials therefore); Tugger (for tunnel laborer work);  
Cable tender; Chuck tender; Powderman - primer house

GROUP 4: Vibrator operator, pavement breaker; Bull gang -  
muckers, trackmen; Concrete crew - includes rodding and  
spreading, Dumpmen (any method)

GROUP 5: Grout crew; Reboundman; Swamper/ Brakeman

-----

LABO0324-010 07/01/2018

SOLANO AND SONOMA COUNTIES

	Rates	Fringes
--	-------	---------

LABORER

Mason Tender-Brick.....	\$ 31.45	22.20
-------------------------	----------	-------

-----

LABO0324-013 06/25/2018

NAPA, SOLANO, AND SONOMA COUNTIES

	Rates	Fringes
--	-------	---------

LABORER (CONSTRUCTION CRAFT

LABORERS - AREA B:)

Construction Specialist

Group.....	\$ 30.49	23.20
GROUP 1.....	\$ 29.79	23.20
GROUP 1-a.....	\$ 30.01	23.20
GROUP 1-c.....	\$ 29.84	23.20
GROUP 1-e.....	\$ 30.34	23.20
GROUP 1-f.....	\$ 29.37	23.20
GROUP 2.....	\$ 29.64	23.20
GROUP 3.....	\$ 29.54	23.20
GROUP 4.....	\$ 23.23	23.20

See groups 1-b and 1-d under laborer classifications.

LABORER (GARDENERS,  
HORTICULTURAL & LANDSCAPE  
LABORERS - AREA B:)

(1) New Construction.....	\$ 29.54	23.20
(2) Establishment Warranty Period.....	\$ 23.23	23.20

LABORER (GUNITE - AREA B:)

GROUP 1.....	\$ 29.75	22.31
GROUP 2.....	\$ 29.25	22.31
GROUP 3.....	\$ 28.66	22.31
GROUP 4.....	\$ 28.54	22.31

LABORER (WRECKING - AREA B:)

GROUP 1.....	\$ 29.79	23.20
GROUP 2.....	\$ 29.64	23.20

FOOTNOTES:

Laborers working off or with or from bos'n chairs, swinging scaffolds, belts shall receive \$0.25 per hour above the applicable wage rate. This shall not apply to workers entitled to receive the wage rate set forth in Group 1-a below.

---

## LABORER CLASSIFICATIONS

CONSTRUCTION SPECIALIST GROUP: Asphalt ironer and raker;  
Chainsaw; Laser beam in connection with laborers' work;  
Cast-in- place manhole form setter; Pressure pipelayer;  
Davis trencher - 300 or similar type (and all small  
trenchers); Blaster; Diamond driller; Multiple unit drill;  
Hydraulic drill

GROUP 1: Asphalt spreader boxes (all types); Barko, Wacker  
and similar type tampers; Buggymobile; Caulker, bander,  
pipewrapper, conduit layer, plastic pipelayer; Certified  
hazardous waste worker including Leade Abatement;  
Compactors of all types; Concrete and magnesite mixer, 1/2  
yd. and under; Concrete pan work; Concrete sander; Concrete  
saw; Cribber and/or shoring; Cut granite curb setter;  
Dri-pak-it machine; Faller, logloader and buckler; Form  
raiser, slip forms; Green cutter; Headerboard, Hubsetter,  
aligner, by any method; High pressure blow pipe (1-1/2" or  
over, 100 lbs. pressure/over); Hydro seeder and similar  
type; Jackhammer operator; Jacking of pipe over 12 inches;  
Jackson and similar type compactor; Kettle tender, pot and  
worker applying asphalt, lay-kold, creosote, lime, caustic  
and similar type materials (applying means applying,  
dipping or handling of such materials); Lagging, sheeting,  
whaling, bracing, trenchjacking, lagging hammer; Magnesite,  
epoxyresin, fiberglass, mastic worker (wet or dry); No

joint pipe and stripping of same, including repair of voids; Pavement breaker and spader, including tool grinder; Perma curb; Pipelayer (including grade checking in connection with pipelaying); Precast-manhole setter; Pressure pipe tester; Post hole digger, air, gas and electric; Power broom sweeper; Power tampers of all types (except as shown in Group 2); Ram set gun and stud gun; Riprap stonepaver and rock-slinger, including placing of sacked concrete and/or sand (wet or dry) and gabions and similar type; Rotary scarifier or multiple head concrete chipping scarifier; Roto and Ditch Witch; Rototiller; Sandblaster, pot, gun, nozzle operators; Signalling and rigging; Tank cleaner; Tree climber; Turbo blaster; Vibrascreed, bull float in connection with laborers' work; Vibrator; Hazardous waste worker (lead removal); Asbestos and mold removal worker

GROUP 1-a: Joy drill model TWM-2A; Gardner-Denver model DH143 and similar type drills; Track driller; Jack leg driller; Wagon driller; Mechanical drillers, all types regardless of type or method of power; Mechanical pipe layers, all types regardless of type or method of power; Blaster and powder; All work of loading, placing and blasting of all powder and explosives of whatever type regardless of method used for such loading and placing; High scalers (including drilling of same); Tree topper; Bit grinder

GROUP 1-b: Sewer cleaners shall receive \$4.00 per day above Group 1 wage rates. ""Sewer cleaner"" means any worker who handles or comes in contact with raw sewage in small diameter sewers. Those who work inside recently active,



large diameter sewers, and all recently active sewer manholes shall receive \$5.00 per day above Group 1 wage rates.

GROUP 1-c: Burning and welding in connection with laborers' work; Synthetic thermoplastics and similar type welding

GROUP 1-d: Maintenance and repair track and road beds. All employees performing work covered herein shall receive \$ .25 per hour above their regular rate for all work performed on underground structures not specifically covered herein. This paragraph shall not be construed to apply to work below ground level in open cut. It shall apply to cut and cover work of subway construction after the temporary cover has been placed.

GROUP 1-e: Work on and/or in bell hole footings and shafts thereof, and work on and in deep footings. (A deep footing is a hole 15 feet or more in depth.) In the event the depth of the footing is unknown at the commencement of excavation, and the final depth exceeds 15 feet, the deep footing wage rate would apply to all employees for each and every day worked on or in the excavation of the footing from the date of inception.

GROUP 1-f: Wire winding machine in connection with guniting or shot crete

GROUP 2: Asphalt shoveler; Cement dumper and handling dry cement or gypsum; Choke-setter and rigger (clearing work); Concrete bucket dumper and chute; Concrete chipping and

grinding; Concrete laborer (wet or dry); Driller tender, chuck tender, nipper; Guinea chaser (stake), grout crew; High pressure nozzle, adductor; Hydraulic monitor (over 100 lbs. pressure); Loading and unloading, carrying and hauling of all rods and materials for use in reinforcing concrete construction; Pittsburgh chipper and similar type brush shredders; Sloper; Single foot, hand-held, pneumatic tamper; All pneumatic, air, gas and electric tools not listed in Groups 1 through 1-f; Jacking of pipe - under 12 inches

GROUP 3: Construction laborers, including bridge and general laborer; Dump, load spotter; Flag person; Fire watcher; Fence erector; Guardrail erector; Gardener, horticultural and landscape laborer; Jetting; Limber, brush loader and piler; Pavement marker (button setter); Maintenance, repair track and road beds; Streetcar and railroad construction track laborer; Temporary air and water lines, Victaulic or similar; Tool room attendant (jobsite only)

GROUP 4: Final clean-up work of debris, grounds and building including but not limited to: street cleaner; cleaning and washing windows; brick cleaner (jobsite only); material cleaner (jobsite only). The classification "material cleaner" is to be utilized under the following conditions:

A: at demolition site for the salvage of the material.

B: at the conclusion of a job where the material is to be salvaged and stocked to be reused on another job.

C: for the cleaning of salvage material at the jobsite or temporary jobsite yard.

The material cleaner classification should not be used in the performance of ""form stripping, cleaning and oiling and moving to the next point of erection"".

---

#### GUNITE LABORER CLASSIFICATIONS

GROUP 1: Structural Nozzleman

GROUP 2: Nozzleman, Gunman, Potman, Groundman

GROUP 3: Reboundman

GROUP 4: Guniting laborer

---

#### WRECKING WORK LABORER CLASSIFICATIONS

GROUP 1: Skilled wrecker (removing and salvaging of sash, windows and materials)

GROUP 2: Semi-skilled wrecker (salvaging of other building materials)

---

LABO0324-019 07/01/2018

Rates	Fringes
-------	---------

Plasterer tender.....\$ 32.02          23.00

Work on a swing stage scaffold: \$1.00 per hour additional.

-----

PAIN0016-004 01/01/2021

MARIN, NAPA, SOLANO & SONOMA COUNTIES

Rates          Fringes

Painters:.....\$ 45.22          25.48

PREMIUMS:

EXOTIC MATERIALS - \$1.25 additional per hour.

SPRAY WORK: - \$0.50 additional per hour.

INDUSTRIAL PAINTING - \$0.25 additional per hour

[Work on industrial buildings used for the manufacture and  
processing of goods for sale or service; steel construction  
(bridges), stacks, towers, tanks, and similar structures]

HIGH WORK:

over 50 feet - \$2.00 per hour additional

100 to 180 feet - \$4.00 per hour additional

Over 180 feet - \$6.00 per hour additional

-----

PAIN0016-005 06/01/2020

ALPINE, BUTTE, COLUSA, EL DORADO (west of the Sierra Nevada  
Mountains), GLENN, LASSEN (west of Hwy. 395, excluding Honey  
Lake); MARIN, MODOC, NAPA, NEVADA (west of the Sierra Nevada

Mountains), PLACER (west of the Sierra Nevada Mountains),  
PLUMAS, SACRAMENTO, SHASTA, SIERRA (west of the Sierra Nevada  
Mountains), SISKIYOU, SOLANO, SONOMA, SUTTER, TEHAMA, TRINITY,  
YOLO AND YUBA COUNTIES

	Rates	Fringes
DRYWALL FINISHER/TAPER.....	\$ 47.38	25.99
-----		
PAIN0016-007 01/01/2019		

ALPINE, AMADOR, BUTTE, COLUSA. EL DORADO (west of the Sierra  
Nevada Mountains), GLENN, LASSEN (west of Highway 395,  
excluding Honey Lake), MODOC, NEVADA (west of the Sierra Nevada  
Mountains), PLACER (west of the Sierra Nevada Mountains),  
PLUMAS, SACRAMENTO, SHASTA, SIERRA (west of the Sierra Nevada  
Mountains), SISKIYOU, SUTTER, TEHAMA, TRINITY, YOLO & YUBA  
COUNTIES

	Rates	Fringes
Painters:.....	\$ 33.68	20.24

SPRAY/SANDBLAST: \$0.50 additional per hour.

EXOTIC MATERIALS: \$1.00 additional per hour.

HIGH TIME: Over 50 ft above ground or water level \$2.00  
additional per hour. 100 to 180 ft above ground or water  
level \$4.00 additional per hour. Over 180 ft above ground  
or water level \$6.00 additional per hour.

-----  
PAIN0016-008 01/01/2019

MARIN, NAPA, SOLANO AND SONOMA COUNTIES

	Rates	Fringes
SOFT FLOOR LAYER.....	\$ 48.60	27.43

-----

PAIN0169-004 07/01/2020

MARIN , NAPA & SONOMA COUNTIES; SOLANO COUNTY (west of a line defined as follows: Hwy. 80 corridor beginning at the City of Fairfield, including Travis Air Force Base and Suisun City; going north of Manakas Corner Rd., continue north on Suisun Valley Rd. to the Napa County line; Hwy. 80 corridor south on Grizzly Island Rd. to the Grizzly Island Management area)

	Rates	Fringes
GLAZIER.....	\$ 52.17	30.55

-----

\* PAIN0567-001 07/01/2020

EL DORADO COUNTY (east of the Sierra Nevada Mountains); LASSEN COUNTY (east of Highway 395, beginning at Stacey and including Honey Lake); NEVADA COUNTY (east of the Sierra Nevada Mountains); PLACER COUNTY (east of the Sierra Nevada Mountains); AND SIERRA COUNTY (east of the Sierra Nevada

Mountains)

	Rates	Fringes
--	-------	---------

Painters:

Brush and Roller.....	\$ 29.80	13.44
Spray Painter & Paperhanger..	\$ 31.29	13.44

PREMIUMS:

Special Coatings (Brush), and Sandblasting = \$0.50/hr

Special Coatings (Spray), and Steeplejack = \$1.00/hr

Special Coating Spray Steel = \$1.25/hr

Swing Stage = \$2.00/hr

\*A special coating is a coating that requires the mixing of 2 or more products.

-----  
PAIN0567-007 07/01/2020

EL DORADO COUNTY (east of the Sierra Nevada Mountains); LASSEN COUNTY (east of Highway 395, beginning at Stacey and including Honey Lake); NEVADA COUNTY (east of the Sierra Nevada Mountains); PLACER COUNTY (east of the Sierra Nevada Mountains) AND SIERRA COUNTY (east of the Sierra Nevada Mountains)

	Rates	Fringes
--	-------	---------

SOFT FLOOR LAYER.....	\$ 31.01	15.48
-----------------------	----------	-------

-----  
PAIN0567-010 07/01/2020

EL DORADO COUNTY (east of the Sierra Nevada Mountains); LASSEN  
COUNTY (east of Highway 395, beginning at Stacey and including  
Honey Lake); NEVADA COUNTY (east of the Sierra Nevada  
Mountains); PLACER COUNTY (east of the Sierra Nevada  
Mountains); AND SIERRA COUNTY (east of the Sierra Nevada  
Mountains)

	Rates	Fringes
Drywall		
(1) Taper.....	\$ 35.20	14.02
(2) Steeplejack - Taper, over 40 ft with open space below.....	\$ 36.70	14.02

-----  
PAIN0767-004 07/01/2020

ALPINE, AMADOR, BUTTE, COLUSA, EL DORADO, GLENN, LASSEN, MODOC,  
NEVADA, PLACER, PLUMAS, SACRAMENTO, SHASTA, SIERRA, SISKIYOU,  
SOLANO (Remainder), SUTTER, TEHAMA, TRINITY, YOLO, YUBA

	Rates	Fringes
GLAZIER.....	\$ 40.61	30.76

PAID HOLIDAYS: New Year's Day, Martin Luther King, Jr. Day,



President's Day, Memorial Day, Independence Day, Labor Day,  
Veteran's Day, Thanksgiving Day, and Christmas Day.

Employee required to wear a body harness shall receive \$1.50  
per hour above the basic hourly rate at any elevation.

-----

PAIN1176-001 07/01/2020

#### HIGHWAY IMPROVEMENT

	Rates	Fringes
Parking Lot Striping/Highway Marking:		
GROUP 1.....	\$ 38.48	16.88
GROUP 2.....	\$ 32.71	16.88
GROUP 3.....	\$ 33.09	16.88

#### CLASSIFICATIONS

GROUP 1: Striper: Layout and application of painted traffic  
stripes and marking; hot thermo plastic; tape, traffic  
stripes and markings

GROUP 2: Gamecourt & Playground Installer

GROUP 3: Protective Coating, Pavement Sealing

-----

PAIN1237-001 06/01/2020

ALPINE; COLUSA; EL DORADO (west of the Sierra Nevada Mountains); GLENN; LASSEN (west of Highway 395, beginning at Stacey and including Honey Lake); MODOC; NEVADA (west of the Sierra Nevada Mountains); PLACER (west of the Sierra Nevada Mountains); PLUMAS; SACRAMENTO; SHASTA; SIERRA (west of the Sierra Nevada Mountains); SISKIYOU; SUTTER; TEHAMA; TRINITY; YOLO AND YUBA COUNTIES

	Rates	Fringes
SOFT FLOOR LAYER.....	\$ 39.61	22.59
-----		

PLAS0300-003 07/01/2018

	Rates	Fringes
PLASTERER		
AREA 295: Alpine, Amador, Butte, Colusa, El Dorado, Glenn, Lassen, Modoc, Nevada, Placer, Plumas, Sacramento, Shasta, Sierra, Siskiyou, Solano, Sutter, Tehema, Trinity, Yolo & Yuba Counties.....	\$ 32.70	31.68
AREA 355: Marin.....	\$ 36.73	31.68
AREA 355: Napa & Sonoma Counties.....	\$ 32.70	31.68
-----		

PLAS0300-005 07/01/2017

	Rates	Fringes
CEMENT MASON/CONCRETE FINISHER...	\$ 33.49	23.67

---

PLUM0038-002 07/01/2020

MARIN AND SONOMA COUNTIES

	Rates	Fringes
PLUMBER (Plumber, Steamfitter, Refrigeration Fitter)		
(1) Work on wooden frame structures 5 stories or less excluding high-rise buildings and commercial work such as hospitals, prisons, hotels, schools, casinos, wastewater treatment plants, and research facilities as well as refrigeration pipefitting, service and repair work - MARKET		
RECOVERY RATE.....	\$ 64.86	43.54
(2) All other work - NEW		
CONSTRUCTION RATE.....	\$ 76.30	45.27

---

PLUM0038-006 07/01/2019

MARIN & SONOMA COUNTIES

	Rates	Fringes
Landscape/Irrigation Fitter		
(Underground/Utility Fitter).....	\$ 63.04	31.48

-----

PLUM0228-001 01/01/2021

BUTTE, COLUSA, GLENN, LASSEN, MODOC, PLUMAS, SHASTA, SIERRA,  
SISKIYOU, SUTTER, TEHAMA, TRINITY & YUBA COUNTIES

	Rates	Fringes
PLUMBER.....	\$ 42.00	35.14

-----

PLUM0343-001 07/01/2020

NAPA AND SOLANO COUNTIES

	Rates	Fringes
PLUMBER/PIPEFITTER		
Light Commercial.....	\$ 30.85	20.40
All Other Work.....	\$ 54.00	38.74

DEFINITION OF LIGHT COMMERCIAL:

Work shall include strip shopping centers, office buildings,

schools and other commercial structures which the total plumbing bid does not exceed Two Hundred and Fifty Thousand (\$250,000) and the total heating and cooling does not exceed Two Hundred Fifty Thousand (\$250,000); or Any projects bid in phases shall not qualify unless the total project is less than Two Hundred Fifty Thousand (\$250,000) for the plumbing bid; and Two Hundred Fifty Thousand (\$250,000) for the heating and cooling bid. Excluded are hospitals, jails, institutions and industrial projects, regardless size of the project

FOOTNOTES: While fitting galvanized material: \$.75 per hour additional. Work from trusses, temporary staging, unguarded structures 35' from the ground or water: \$.75 per hour additional. Work from swinging scaffolds, boatswains chairs or similar devices: \$.75 per hour additional.

-----

PLUM0350-001 08/01/2019

EL DORADO COUNTY (Lake Tahoe area only); NEVADA COUNTY (Lake Tahoe area only); AND PLACER COUNTY (Lake Tahoe area only)

	Rates	Fringes
PLUMBER/PIPEFITTER.....	\$ 45.84	13.81

-----

PLUM0355-001 07/01/2020

ALPINE, AMADOR, BUTTE, COLUSA, EL DORADO, GLENN, LASSEN, MODOC,

NAPA, NEVADA, PLACER, PLUMAS, SACRAMENTO, SHASTA, SIERRA,  
SISKIYOU, SOLANO, SUTTER, TEHAMA, TRINITY, YOLO, AND YUBA  
COUNTIES

	Rates	Fringes
--	-------	---------

Underground Utility Worker

/Landscape Fitter.....	\$ 29.90	16.30
------------------------	----------	-------

-----

PLUM0442-003 07/01/2020

AMADOR (South of San Joaquin River) and ALPINE COUNTIES

	Rates	Fringes
--	-------	---------

PLUMBER.....	\$ 45.50	31.89
--------------	----------	-------

-----

PLUM0447-001 07/01/2020

AMADOR (north of San Joaquin River), EL DORADO (excluding Lake  
Tahoe area), NEVADA (excluding Lake Tahoe area); PLACER  
(excluding Lake Tahoe area), SACRAMENTO AND YOLO COUNTIES

	Rates	Fringes
--	-------	---------

PLUMBER/PIPEFITTER

Journeyman.....	\$ 54.37	25.75
-----------------	----------	-------

Light Commercial Work.....	\$ 36.23	17.72
----------------------------	----------	-------

-----

ROOF0081-006 08/01/2020

MARIN, NAPA, SOLANO AND SONOMA COUNTIES

	Rates	Fringes
Roofer.....	\$ 44.62	19.36

---

ROOF0081-007 08/01/2020

ALPINE, BUTTE, COLUSA, EL DORADO, GLENN, LASSEN, MODOC, NEVADA,  
PLACER, PLUMAS, SACRAMENTO, SHASTA, SIERRA, SISKIYOU, SUTTER,  
TEHAMA, TRINITY, YOLO, AND YUBA COUNTIES

	Rates	Fringes
Roofer.....	\$ 39.73	19.11

---

SFCA0483-003 01/01/2021

MARIN, NAPA, SOLANO AND SONOMA COUNTIES

	Rates	Fringes
SPRINKLER FITTER (Fire Sprinklers).....	\$ 67.99	32.85

---

\* SFCA0669-003 04/01/2021

ALPINE, BUTTE, COLUSA, EL DORADO, GLENN, LASSEN, MODOC, NEVADA,

PLACER, PLUMAS, SACRAMENTO, SHASTA, SIERRA, SISKIYOU, SUTTER,  
TEHAMA, TRINITY, YOLO AND YUBA COUNTIES

	Rates	Fringes
SPRINKLER FITTER.....	\$ 42.34	26.29

---

SHEE0104-006 06/29/2020

MARIN, NAPA, SOLANO SONOMA & TRINITY COUNTIES

	Rates	Fringes
Sheet Metal Worker		
Mechanical Contracts		
\$200,000 or less.....	\$ 55.92	45.29
All other work.....	\$ 64.06	46.83

---

SHEE0104-009 07/01/2020

AMADOR, COLUSA, EL DORADO, NEVADA, PLACER, SACRAMENTO, SUTTER,  
YOLO AND YUBA COUNTIES

	Rates	Fringes
SHEET METAL WORKER.....	\$ 46.60	40.21

---

SHEE0104-010 07/01/2020



AIPINE COUNTY

	Rates	Fringes
SHEET METAL WORKER.....	\$ 43.50	37.42

-----

SHEE0104-011 07/01/2020

BUTTE, COLUSA, EL DORADO, GLENN, LASSEN, MODOC, NEVADA, PLACER,  
PLUMAS, SACRAMENTO, SHASTA, SIERRA, SISKIYOU, SUTTER, TEHAMA,  
YOLO AND YUBA COUNTIES

	Rates	Fringes
Sheet Metal Worker (Metal decking and siding only).....	\$ 44.45	35.55

-----

SHEE0104-014 07/01/2020

MARIN, NAPA, SOLANO, SONOMA AND TRINITY COUNTIES

	Rates	Fringes
SHEET METAL WORKER (Metal Decking and Siding only).....	\$ 44.45	35.55

-----

SHEE0104-019 07/01/2020

BUTTE, GLENN, LASSEN, MODOC, PLUMAS, SHASTA, SIERRA, SISKIYOU  
AND TEHAMA COUNTIES

	Rates	Fringes
--	-------	---------

#### SHEET METAL WORKER

Mechanical Jobs \$200,000 & under.....	\$ 35.16	35.88
Mechanical Jobs over \$200,000.....	\$ 46.60	40.21

-----  
\* TEAM0094-001 07/01/2019

	Rates	Fringes
--	-------	---------

#### Truck drivers:

GROUP 1.....	\$ 32.80	29.19
GROUP 2.....	\$ 33.10	29.19
GROUP 3.....	\$ 33.40	29.19
GROUP 4.....	\$ 33.75	29.19
GROUP 5.....	\$ 34.10	29.19

#### FOOTNOTES:

Articulated dump truck; Bulk cement spreader (with or without auger); Dumpcrete truck; Skid truck (debris box); Dry pre-batch concrete mix trucks; Dumpster or similar type; Slurry truck: Use dump truck yardage rate.

Heater planer; Asphalt burner; Scarifier burner; Industrial lift truck (mechanical tailgate); Utility and clean-up truck: Use appropriate rate for the power unit or the equipment utilized.

## TRUCK DRIVER CLASSIFICATIONS

GROUP 1: Dump trucks, under 6 yds.; Single unit flat rack (2-axle unit); Nipper truck (when flat rack truck is used appropriate flat rack shall apply); Concrete pump truck (when flat rack truck is used appropriate flat rack shall apply); Concrete pump machine; Fork lift and lift jitneys; Fuel and/or grease truck driver or fuel person; Snow buggy; Steam cleaning; Bus or personhaul driver; Escort or pilot car driver; Pickup truck; Teamster oiler/greaser and/or serviceperson; Hook tender (including loading and unloading); Team driver; Tool room attendant (refineries)

GROUP 2: Dump trucks, 6 yds. and under 8 yds.; Transit mixers, through 10 yds.; Water trucks, under 7,000 gals.; Jetting trucks, under 7,000 gals.; Single-unit flat rack (3-axle unit); Highbed heavy duty transport; Scissor truck; Rubber-tired muck car (not self-loaded); Rubber-tired truck jumbo; Winch truck and "A" frame drivers; Combination winch truck with hoist; Road oil truck or bootperson; Buggymobile; Ross, Hyster and similar straddle carriers; Small rubber-tired tractor

GROUP 3: Dump trucks, 8 yds. and including 24 yds.; Transit mixers, over 10 yds.; Water trucks, 7,000 gals. and over; Jetting trucks, 7,000 gals. and over; Vacuum trucks under 7500 gals. Trucks towing tilt bed or flat bed pull trailers; Lowbed heavy duty transport; Heavy duty transport tiller person; Self-propelled street sweeper with self-contained refuse bin; Boom truck - hydro-lift or

Swedish type extension or retracting crane; P.B. or similar type self-loading truck; Tire repairperson; Combination bootperson and road oiler; Dry distribution truck (A bootperson when employed on such equipment, shall receive the rate specified for the classification of road oil trucks or bootperson); Ammonia nitrate distributor, driver and mixer; Snow Go and/or plow

GROUP 4: Dump trucks, over 25 yds. and under 65 yds.; Water pulls - DW 10's, 20's, 21's and other similar equipment when pulling Aqua/pak or water tank trailers; Helicopter pilots (when transporting men and materials); Lowbedk Heavy Duty Transport up to including 7 axles; DW10's, 20's, 21's and other similar Cat type, Terra Cobra, LeTourneau Pulls, Tournorocker, Euclid and similar type equipment when pulling fuel and/or grease tank trailers or other miscellaneous trailers; Vacuum Trucks 7500 gals and over and truck repairman

GROUP 5: Dump trucks, 65 yds. and over; Holland hauler; Low bed Heavy Duty Transport over 7 axles

-----

WELDERS - Receive rate prescribed for craft performing operation to which welding is incidental.

=====

Note: Executive Order (EO) 13706, Establishing Paid Sick Leave

for Federal Contractors applies to all contracts subject to the Davis-Bacon Act for which the contract is awarded (and any solicitation was issued) on or after January 1, 2017. If this contract is covered by the EO, the contractor must provide employees with 1 hour of paid sick leave for every 30 hours they work, up to 56 hours of paid sick leave each year. Employees must be permitted to use paid sick leave for their own illness, injury or other health-related needs, including preventive care; to assist a family member (or person who is like family to the employee) who is ill, injured, or has other health-related needs, including preventive care; or for reasons resulting from, or to assist a family member (or person who is like family to the employee) who is a victim of, domestic violence, sexual assault, or stalking. Additional information on contractor requirements and worker protections under the EO is available at [www.dol.gov/whd/govcontracts](http://www.dol.gov/whd/govcontracts).

Unlisted classifications needed for work not included within the scope of the classifications listed may be added after award only as provided in the labor standards contract clauses (29CFR 5.5 (a) (1) (ii)).

-----

The body of each wage determination lists the classification and wage rates that have been found to be prevailing for the cited type(s) of construction in the area covered by the wage determination. The classifications are listed in alphabetical order of ""identifiers"" that indicate whether the particular

rate is a union rate (current union negotiated rate for local), a survey rate (weighted average rate) or a union average rate (weighted union average rate).

#### Union Rate Identifiers

A four letter classification abbreviation identifier enclosed in dotted lines beginning with characters other than ""SU"" or ""UAVG"" denotes that the union classification and rate were prevailing for that classification in the survey. Example: PLUM0198-005 07/01/2014. PLUM is an abbreviation identifier of the union which prevailed in the survey for this classification, which in this example would be Plumbers. 0198 indicates the local union number or district council number where applicable, i.e., Plumbers Local 0198. The next number, 005 in the example, is an internal number used in processing the wage determination. 07/01/2014 is the effective date of the most current negotiated rate, which in this example is July 1, 2014.

Union prevailing wage rates are updated to reflect all rate changes in the collective bargaining agreement (CBA) governing this classification and rate.

#### Survey Rate Identifiers

Classifications listed under the ""SU"" identifier indicate that no one rate prevailed for this classification in the survey and the published rate is derived by computing a weighted average rate based on all the rates reported in the survey for that classification. As this weighted average rate includes all

rates reported in the survey, it may include both union and non-union rates. Example: SULA2012-007 5/13/2014. SU indicates the rates are survey rates based on a weighted average calculation of rates and are not majority rates. LA indicates the State of Louisiana. 2012 is the year of survey on which these classifications and rates are based. The next number, 007 in the example, is an internal number used in producing the wage determination. 5/13/2014 indicates the survey completion date for the classifications and rates under that identifier.

Survey wage rates are not updated and remain in effect until a new survey is conducted.

#### Union Average Rate Identifiers

Classification(s) listed under the UAVG identifier indicate that no single majority rate prevailed for those classifications; however, 100% of the data reported for the classifications was union data. EXAMPLE: UAVG-OH-0010 08/29/2014. UAVG indicates that the rate is a weighted union average rate. OH indicates the state. The next number, 0010 in the example, is an internal number used in producing the wage determination. 08/29/2014 indicates the survey completion date for the classifications and rates under that identifier.

A UAVG rate will be updated once a year, usually in January of each year, to reflect a weighted average of the current negotiated/CBA rate of the union locals from which the rate is based.

---

## WAGE DETERMINATION APPEALS PROCESS

1.) Has there been an initial decision in the matter? This can be:

- \* an existing published wage determination
- \* a survey underlying a wage determination
- \* a Wage and Hour Division letter setting forth a position on a wage determination matter
- \* a conformance (additional classification and rate) ruling

On survey related matters, initial contact, including requests for summaries of surveys, should be with the Wage and Hour Regional Office for the area in which the survey was conducted because those Regional Offices have responsibility for the Davis-Bacon survey program. If the response from this initial contact is not satisfactory, then the process described in 2.) and 3.) should be followed.

With regard to any other matter not yet ripe for the formal process described here, initial contact should be with the Branch of Construction Wage Determinations. Write to:

Branch of Construction Wage Determinations  
Wage and Hour Division  
U.S. Department of Labor  
200 Constitution Avenue, N.W.  
Washington, DC 20210



2.) If the answer to the question in 1.) is yes, then an interested party (those affected by the action) can request review and reconsideration from the Wage and Hour Administrator (See 29 CFR Part 1.8 and 29 CFR Part 7). Write to:

Wage and Hour Administrator  
U.S. Department of Labor  
200 Constitution Avenue, N.W.  
Washington, DC 20210

The request should be accompanied by a full statement of the interested party's position and by any information (wage payment data, project description, area practice material, etc.) that the requestor considers relevant to the issue.

3.) If the decision of the Administrator is not favorable, an interested party may appeal directly to the Administrative Review Board (formerly the Wage Appeals Board). Write to:

Administrative Review Board  
U.S. Department of Labor  
200 Constitution Avenue, N.W.  
Washington, DC 20210

4.) All decisions by the Administrative Review Board are final.

=====

END OF GENERAL DECISION"